



*recipes  
inside!*

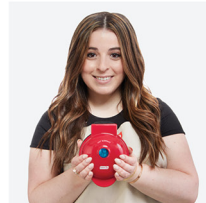
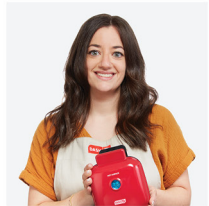


#DPM200

# POCKET SANDWICH MAKER

Instruction Manual | Recipe Guide





# POCKET SANDWICH MAKER

- Important Safeguards..... 4-9
- Parts & Features..... 10
- Using Your Pocket Sandwich Maker ..... 12-15
- Cleaning & Maintenance..... 16
- Troubleshooting ..... 18
- Tips & Tricks ..... 19
- Recipe Guide ..... 20-23
- Notes.....24-25
- Customer Support ..... 26
- Warranty ..... 27

*the dash team!*

# IMPORTANT SAFEGUARDS: PLEASE READ AND SAVE THIS INSTRUCTION AND CARE MANUAL.

When using electrical appliances, basic safety precautions should always be followed, including:

- Read all instructions before use.
- Remove all bags and packaging from appliance before use.
- Never leave appliance unattended when in use.
- Make sure the appliance is cleaned thoroughly before using.
- Do not use appliance for other than intended use. For household use only. Do not use outdoors.
- Only use the appliance on a stable, dry surface.
- **ATTENTION:** This appliance cannot be used with an external timer or a separate remote control.
- Do not place appliance on or near a hot gas burner, hot electric burner, or in a heated oven.
- Extreme caution must be used when moving an appliance containing hot oil or other hot liquids.
- This appliance can be used by persons with reduced physical, sensory, or mental capabilities or lack of experience of knowledge, if they have been given supervision or instruction concerning use of the appliance in a safe way and understand the hazards involved.
- This appliance is not a toy. Do not let children use this appliance. Close supervision is necessary when any kitchen appliance is used by or near children.

- Do not use metal utensils on the Cooking Surface as this will damage the nonstick surface.
- **Warning: Hot surfaces!** Never touch the Cooking Surface or Cover while appliance is in use. Always lift and lower the Cover by the Cover Handle.
- **DO NOT** lift the Cover so that your arm is over the Cooking Surface as it is hot and may cause injury. Lift from the side.
- When using your Pocket Sandwich Maker, your food may leak while it is cooking. Do not touch these liquids and be careful not to overfill the Sandwich Maker: failure to do so may result in burns.
- **DO NOT** use the Pocket Sandwich Maker near water or other liquids, with wet hands, or while standing on a wet surface.
- To prevent the risk of fire, electric shock, or personal injury, do not put cord, plug, or appliance in or near water or other liquids. The Pocket Sandwich Maker is **NOT** dishwasher safe.
- Do not let the cord touch hot surfaces or hang over the edge of tables or counters.
- Refrain from using attachments that are not recommended by the appliance manufacturer, as this may result in fire, electric shock, or personal injury.
- Unplug the appliance and allow to cool prior to moving, cleaning, storage, and when not in use. To unplug, grasp the plug and pull from the outlet. Never pull from the power cord.
- Never use abrasive cleaning agents to clean your appliance as this may damage the Pocket Sandwich Maker and its nonstick Cooking Surface.
- Do not operate this appliance with a damaged cord, damaged plug, after the appliance malfunctions, is dropped, or damaged in any manner. Return appliance to the nearest authorized service

facility for examination, repair, or adjustment.

- For maintenance other than cleaning, please contact StoreBound directly at 1-800-898-6970 Monday – Friday or by email at support@bydash.com.
- StoreBound shall not accept liability for damages caused by improper use of the appliance.
- Improper use of the appliance can result in property damage or even in personal injury.
- This appliance has a polarized plug (one blade is wider than the other). To reduce the risk of electric shock, this plug will fit in a polarized outlet only one way. If the plug does not completely fit in the outlet, reverse the plug. If it still does not fit, contact a qualified electrician. Do not

attempt to modify the plug in any way.

- A short power supply cord is to be provided to reduce the risk resulting from becoming entangled in or tripping over a longer cord. An extension cord may be used if care is exercised in its use. If an extension cord is used, the marked electrical rating of the extension cord should be at least as great as the electrical rating of the appliance. If the appliance is of the grounded type, the extension cord should be a grounding 3-wire cord. The extension cord should be arranged so that it will not drape over the countertop or tabletop where it can be pulled on by children or tripped over unintentionally.

**IMPORTANT SAFEGUARDS: PLEASE READ AND SAVE THIS INSTRUCTION AND CARE MANUAL.**

## **GARANTIES IMPORTANTES: VEUILLEZ LIRE ET CONSERVER CE MANUEL D'UTILISATION ET ENTRETIEN**

Lors de l'utilisation d'appareils électriques, il faut toujours respecter les précautions de sécurité de base, notamment:

- Lisez toutes les instructions avant utilisation.
- Retirez tout sac ou emballage de l'appareil avant utilisation.
- Ne laissez jamais l'appareil sans surveillance pendant son utilisation.
- Assurez-vous que l'appareil est minutieusement nettoyé avant utilisation.
- N'utilisez pas l'appareil en dehors de son utilisation prévue. Pour usage ménager uniquement. Ne l'utilisez pas à l'extérieur.
- N'utilisez l'appareil que sur une surface stable et sèche.
- ATTENTION : Cet appareil ne peut pas être utilisé avec une minuterie externe ou un télécommande.
- Ne placez pas l'appareil sur ou à proximité d'un brûleur à gaz ou électrique, ou d'un four chaud.
- Une extrême prudence doit être utilisée lors du déplacement d'un appareil contenant de l'huile chaude ou d'autres liquides chauds.
- Cet appareil peut être utilisé par des personnes dont les capacités physiques, sensorielles ou mentales sont réduites ou qui manquent d'expérience et de connaissances, à condition qu'elles aient reçu une supervision ou des instructions concernant l'utilisation de l'appareil en toute sécurité et qu'elles comprennent les risques encourus.
- Cet appareil n'est pas un jouet. Ne laissez pas d'enfants utiliser cet appareil. Une étroite surveillance est nécessaire lorsqu'un appareil est utilisé par ou à proximité d'enfants.
- N'utilisez pas d'ustensiles en métal sur la surface de cuisson car cela endommagerait la surface anti-

adhérente.

- Avertissement : Surfaces chaudes! Ne touchez jamais la surface de cuisson ou le couvercle pendant l'utilisation de l'appareil. Soulevez et baissez toujours le couvercle à l'aide de sa poignée.
- NE soulevez PAS le couvercle pour que votre bras se trouve au-dessus de la surface de cuisson brûlante, car cela pourrait entraîner des blessures. Soulevez par le côté.
- Lorsque vous utilisez votre Machine à sandwich de poche, vos aliments risquent de couler pendant la cuisson. Ne touchez pas ces liquides et veillez à ne pas trop remplir la Machine à sandwich : vous risqueriez de vous brûler.
- N'utilisez PAS la Machine à sandwich de poche à proximité de l'eau ou d'autres liquides, avec des mains mouillées, ou si vous vous tenez sur une surface mouillée.
- Afin d'éviter les risques de feux, d'électrocution, ou de dommages corporels, ne mettez pas le cordon, la prise ou l'appareil dans ou à proximité de l'eau ou d'autres liquides. La Machine à sandwich de poche n'est PAS lavable en machine.
- Ne laissez pas le cordon toucher

des surfaces chaudes ou pendre au niveau des bords de tables ou de comptoirs.

- Évitez d'utiliser des accessoires qui ne sont pas recommandés par le fabricant de l'appareil, car ils pourraient entraîner un feu, une électrocution ou un dommage corporel.
- Débrancher l'appareil et laissez refroidir avant déplacement, nettoyage ou entreposage. Pour débrancher, saisissez la fiche et retirez-la de la prise. Ne tirez jamais sur le cordon d'alimentation.
- N'utilisez jamais des produits d'entretien abrasifs pour nettoyer l'appareil, car cela pourrait endommager la Machine à sandwich de poche et sa surface de cuisson anti-adhérente.
- N'utilisez pas cet appareil avec un cordon endommagé, une prise endommagée, ou si l'appareil est défaillant, s'il est tombé ou endommagé de quelque façon. Pour toute inspection, réparation ou ajustement, ramenez l'appareil au détaillant agréé le plus proche.
- Pour toute question liée à l'entretien autre que le nettoyage, veuillez contacter StoreBound directement

au 1-800-898-6970 du lundi au vendredi, ou par courriel à [support@bydash.com](mailto:support@bydash.com).

- StoreBound n'est nullement responsable des dommages causés par une mauvaise utilisation de l'appareil.
- Une mauvaise utilisation de l'appareil peut entraîner des dommages matériels ou même des blessures corporelles.
- Cet appareil a une fiche polarisée (un des brins est plus large que l'autre). Afin de réduire le risque d'électrocution, cette fiche ne s'insère dans la prise électrique que d'une façon. Si la fiche ne s'insère pas complètement dans la prise, inversez la fiche. Si elle ne s'insère toujours pas, contactez un électricien qualifié. N'essayez pas de modifier la fiche de quelque façon que ce soit.

- Un cordon d'alimentation court doit être fourni afin d'éviter le risque d'emmêlement ou de trébuchement lié aux cordons plus longs. Une rallonge peut être utilisée à condition de faire attention. Si une rallonge est utilisée, la puissance électrique indiquée sur la rallonge doit être au moins aussi grande que celle de l'appareil. Si l'appareil est connecté à la terre, la rallonge doit être un cordon tripolaire avec prise de terre. La rallonge doit être disposée de manière à ne pas reposer sur le comptoir ou sur la table où elle peut être tirée par un enfant ou source de trébuchement involontaire.

## MESURES DE SÉCURITÉ IMPORTANTES: VEUILLEZ LIRE ET CONSERVER CE MANUEL D'UTILISATION

## PARTS & FEATURES



## USING YOUR POCKET SANDWICH MAKER

Before first use, remove all packaging material and thoroughly clean your Pocket Sandwich Maker.



Never touch the Cooking Surface or Cover while appliance is in use.



DO NOT lift the Cover so that your arm is over the Cooking Surface as it is hot and may cause injury.



Always lift and lower the Cover by the Cover Handle. Lift from the side.

## USING YOUR POCKET SANDWICH MAKER



**1** Place your Dash Pocket Sandwich Maker on a stable and dry surface. Plug the cord into a power outlet. The blue Indicator Light will illuminate (**photo A**), signaling that the Pocket Sandwich Maker is heating up.



**2** Once the Cooking Surface reaches its optimal temperature, the Indicator Light will turn off. Carefully lift the Cover by the Handle (**photo B**).

## USING YOUR POCKET SANDWICH MAKER



- 3 Spray both Cooking Surfaces with a little cooking spray or basting brush with butter (photo C).
- 4 Place your ingredients on the Cooking Surface (photo D). Close Cover and Latch.

## USING YOUR POCKET SANDWICH MAKER



- 5 After a few minutes, or until your pockets are crisped and golden, lift the Cover (photo E). Remove your pockets from the Cooking Surface with a heat-resistant nylon or silicone cooking utensil (photo F).  
**Note:** DO NOT use metal utensils to remove or place food on the Cooking Surface as this will damage the nonstick Cooking Surface.
- 6 Once finished, unplug the appliance and allow to cool before moving or cleaning. Wrap the cord around the base and store.  
**Caution:** DO NOT lift Cover so that your arm is over the Cooking Surface as it is hot and may cause injury. Lift from the side.



## CLEANING & MAINTENANCE

Always allow the appliance to cool completely before moving, cleaning, or storing. Do not submerge appliance in water or any other liquids. Never use abrasive cleaning agents to clean your Pocket Sandwich Maker as this may damage the appliance.

In order to keep your Pocket Sandwich Maker in pristine working order, thoroughly clean the appliance after each use. This will prevent the build-up of food or oil.

- Unplug Pocket Sandwich Maker and allow it to cool completely.
- Using a damp, soapy cloth, wipe down the Cooking Surface, its edges and the Cover. Thoroughly rinse the cloth and wipe again.
- Thoroughly dry the Pocket Sandwich Maker before storing.
- If there is food burned onto the Cooking Surface, pour on a little cooking oil and let sit for 5 to 10 minutes. Scrub the Surface with a sponge or soft bristled brush to dislodge food. Use a damp, soapy cloth to wipe down the Cooking Surface. Thoroughly rinse the cloth and wipe again. If any food remains, pour on cooking oil and let sit for a few hours, then scrub and wipe clean.
- Never use abrasive cleaning agents to clean your appliance as this may damage the Pocket Sandwich Maker and its nonstick Cooking Surface.



**The blue Indicator Light on the Pocket Sandwich Maker keeps shutting off.**

This is normal. During the cooking process, the heating element will automatically turn on and off to regulate the temperature and ensure that the Cooking Surface does not get too hot or cold. When this occurs, the Indicator Light turns on and off.

**How do I know when the Pocket Sandwich Maker is heated and ready to use?**

When the Pocket Sandwich Maker reaches the optimal temperature, the blue Indicator Light will turn off and that means you're ready to get cooking!

**There is no on/off button.**

How do I turn the Pocket Sandwich Maker off and on? To turn on, simply plug in the power cord. When you're done cooking, turn off the Pocket Sandwich Maker by unplugging it.

**When using my Pocket Sandwich Maker, the Cover gets hot.**

Always lift and lower the Cover by the Cover Handle. To prevent personal injury, DO NOT lift the Cover so that your arm is over the Cooking Surface as it is hot and may cause injury. Lift from the side.

**After using my Pocket Sandwich Maker a few times, food is starting to stick to the surface. What is happening?**

There is probably a build-up of burnt food residue on the Cooking Surface. This is normal, especially when cooking foods with sugar. Allow the appliance to cool fully, pour on a little cooking oil and let sit for 5-10 minutes. Scrub the Cooking Surface with a non-abrasive sponge or soft bristled brush to dislodge food. Use a damp, soapy cloth to wipe down the Cooking Surface. Rinse the cloth and wipe again. If food remains, pour on cooking oil and let sit for a few hours, then scrub and wipe clean.

**My Pocket Sandwich Maker is making a hissing sound while it's cooking. Is this normal?**

If you overfill the Pocket Sandwich Maker, it will make a noise as extra steam is released.

**The Indicator Light will not turn on and the Cooking Surface is failing to heat.**

Ensure that the power cord is plugged into the power outlet.

Check to make sure the power outlet is operating correctly.

Determine if a power failure has occurred in your home, apartment, or building.



For soft or jelly-like sandwich fillings, use medium sliced white or whole wheat bread. For small amounts of filling use thinner bread.



Add butter to the Cooking Surface for extra flavor or use a basting brush on the bread slices before grilling.



Get fancy! Suggested garnishes for sandwiches include: Lettuce, parsley, mint, stuffed olive halves, onion, tomato etc...



A teaspoon of sugar sprinkled on the outside makes toasted sandwiches crispier (especially for sandwiches with fruit fillings).



# RECIPE GUIDE



Follow us!

@bydash | recipes, videos, & inspiration

@unprocessyourfood | veg & vegan-friendly meals

Bacon, Tomato & Cheese Pocket	2 slices bread 1 slice tomato, sliced thin 1 slice Swiss cheese 1 slice bacon
Quesadilla Pocket	4" tortilla (corn or flour) ¼ cup shredded Mexican cheese blend 2 tbsp salsa
Cinnamon Bun	1 piece refrigerated cinnamon roll dough dusting of powdered sugar
Meat Pie / Empanada	4 triangles refrigerated crescent roll dough ¼ cup seasoned ground beef filling (beef, tomato sauce, sofrito, chopped onions)
Cheesy Biscuit Pocket	1 large biscuit, sliced in half lengthwise 1 slice sharp Cheddar cheese
Stuffed Mac & Cheese Pocket	2 slices bread 2 tbsp macaroni & cheese 1 tbsp butter, to coat bread
Breakfast Sunshine Pocket	large English muffin, buttered 1 egg, scrambled 1 turkey sausage sliced thin 1 slice American cheese

Pizza Pocket	2 slices bread 3 slices pepperoni ¼ cup mozzarella, shredded marinara sauce for dipping
Ham & Cheese Pocket	2 slices bread 1 slice ham 1 slice Swiss cheese
Nutella® & Banana Pocket	2 slices bread ¼ banana, sliced thin 1 tbsp Nutella®
PB & J Pockets	2 slices bread 1 tbsp peanut butter 1 tbsp organic jam
Tuna Melt Pocket	2 slices bread 2 tbsp tuna salad 1 slice provolone
Baked Brie Pocket	2 slices bread 1 slices Brie, very thinly sliced and 4" in length 1 tbsp raspberry jam

---

---

---

---

---

---

---

---

---

---

---

---

---

---

---

---

---

---

---

---

---

---

---

---

---

---

---

---

---

---

---

---

---

---

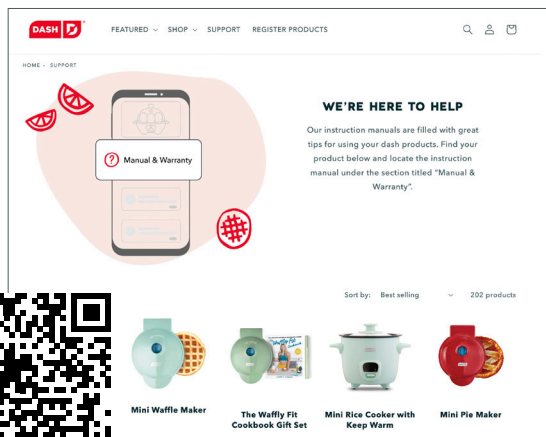
---

---

**FEEL GOOD  
GUARANTEE™**

Dash values quality and workmanship and stands behind this product with our Feel Good Guarantee™. To learn more about our commitment to quality, visit [bydash.com/feelgood](http://bydash.com/feelgood).

We're here to help! Our customer support teams in the US and Canada are at your service Monday - Friday. Contact us at **1 (800) 898-6970** or [support@bydash.com](mailto:support@bydash.com).



scan here



[bydash.com/help](http://bydash.com/help)

**STOREBOUND, LLC - 1 YEAR LIMITED WARRANTY**

Your StoreBound product is warranted to be free from defects in material and workmanship for a period of one (1) year from the date of the original purchase when utilized for normal and intended household use. Should any defect covered by the terms of the limited warranty be discovered within one (1) year, StoreBound, LLC will repair or replace the defective part. To process a warranty claim, contact Customer Support at 1-800-898-6970 for further assistance and instruction. A Customer Support agent will assist you by troubleshooting minor problems. If troubleshooting fails to fix the problem, a return authorization will be issued. Proof of purchase indicating the date and place of purchase is required and should accompany the return. You must also include your full name, shipping address, and telephone number. We are unable to ship returns to a PO box. StoreBound will not be responsible for delays or unprocessed claims resulting from a purchaser's failure to provide any or all of the necessary information. Freight costs must be prepaid by the purchaser.

Send all inquiries to [support@bydash.com](mailto:support@bydash.com). There are no express warranties except as listed above.

REPAIR OR REPLACEMENT AS PROVIDED UNDER THIS WARRANTY IS THE EXCLUSIVE REMEDY OF THE CUSTOMER. STOREBOUND SHALL NOT BE LIABLE FOR ANY INCIDENTAL OR CONSEQUENTIAL DAMAGES OR FOR BREACH OF ANY EXPRESS OR IMPLIED WARRANTY ON THIS PRODUCT EXCEPT TO THE EXTENT REQUIRED BY APPLICABLE LAW. ANY IMPLIED WARRANTY OF MERCHANTABILITY OR FITNESS FOR A PARTICULAR PURPOSE ON THIS PRODUCT IS LIMITED IN DURATION TO THE DURATION OF THIS WARRANTY.

Some states do not allow the exclusion or limitation of incidental or consequential damages, or limitations on how long an implied warranty lasts. Therefore, the above exclusions or limitations may not apply to you. This warranty gives you specific legal rights and you may also have other rights, which vary from state to state.

**REPAIRS**

DANGER! Risk of electric shock! The Dash Pocket Sandwich Maker is an electrical appliance. Do not attempt to repair the appliance yourself under any circumstances. Contact Customer Support regarding repairs to the appliance.

**TECHNICAL SPECIFICATIONS**

Voltage 120V ~ 60Hz  
Power Rating 420W  
Stock#: DPM200\_20210412\_V6



1-800-898-6970 | @bydash | bydash.com