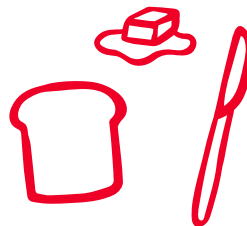


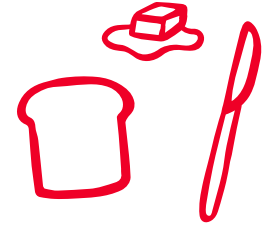


DST200

SMARTSTORE™ 2-SLICE TOASTER

Instruction Manual

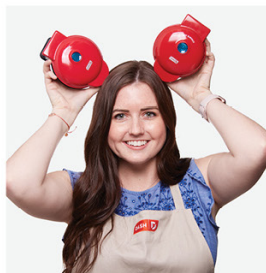




SMARTSTORE™ 2-SLICE TOASTER



- Important Safeguards 4-5
- Parts & Features 6
- Using Your Toaster 7-11
- Tips & Tricks 12
- Cleaning & Maintenance 13
- Recipe Ideas 14-15
- Notes..... 16-17
- Customer Support 18
- Warranty..... 19



the dash team!

IMPORTANT SAFEGUARDS: PLEASE READ AND SAVE THIS INSTRUCTION AND CARE MANUAL.

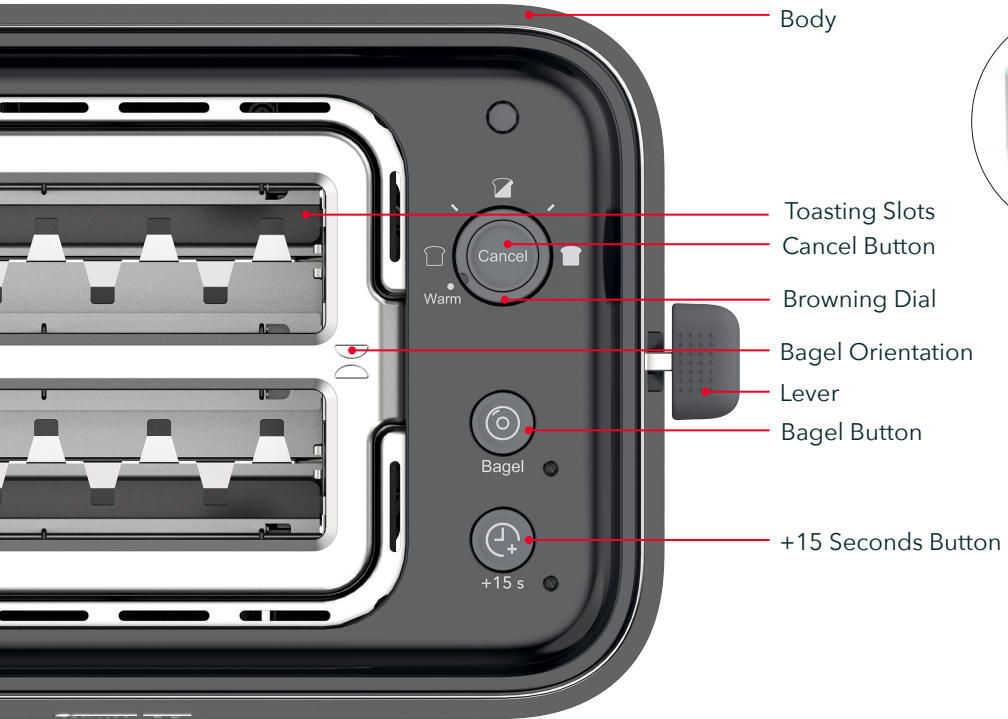
When using electrical appliances, basic safety precautions should be followed, including:

- Remove all bags and packaging from the appliance prior to use.
- Never leave the Toaster unattended while in use.
- **Warning:** Hot surfaces. Do not touch hot surfaces. Use handles or knobs.
- Close supervision is necessary when the appliance is used by or near children.
- Do not operate this appliance with a damaged cord, damaged plug, after the appliance malfunctions, is dropped or damaged in any manner. Return your Toaster to the nearest authorized service facility for examination, repair, or adjustment.
- Do not place the appliance on or near a hot gas burner, hot electric burner, or in a heated oven.
- When using extension cords, make sure the marked electrical rating is at least as great as the electrical rating of the appliance.
- To protect against electric shock, do not immerse the appliance, plug, or cord in water or any other liquid.
- This appliance is not intended for use by persons (including children) with reduced physical, sensory or mental capabilities, or lack of experience and knowledge unless they are provided with supervision and instruction concerning use of the appliance by a person responsible for their safety.
- Do not place utensils, fingers, or other foreign objects inside the Toaster while in use, as this may result in fire, electric shock, or injury.
- Do not use the appliance for anything other than its intended use. For household use only.
- Unplug from outlet when not in use and before cleaning. Allow to cool before putting on or taking off parts.
- Do not let the cord hang over the edge of tables or counters.
- Do not attempt to dislodge food when the Toaster is plugged in. Unplug and allow the appliance to cool down completely before proceeding.
- Do not use attachments that are not recommended by the appliance manufacturer, as this may result in fire, electric shock, or personal injury.
- Do not let the power cord touch hot surfaces as the cord may become damaged by the heat.
- Do not use the appliance for defrosting food other than bread, bagels and waffles.
- Do not place wet foods inside the Toaster.
- Oversized foods, utensils, or metal foil packages must not be inserted into the Toaster as this may result in fire or electric shock.
- Do not place food in the Toaster that has been covered with butter, jelly, or other condiments as this may result in fire, smoke, or jamming of the

appliance.

- A fire may occur if the Toaster is covered by or touching flammable materials, such as curtains, draperies or walls, and the like, when in operation.
- StoreBound shall not accept liability for damages caused by improper use of the appliance.
- This appliance has a polarized plug (one blade is wider than the other). To reduce the risk of electric shock, this plug will fit in a polarized outlet only one way. If the plug does not completely fit in the outlet, reverse the plug. If it still does not fit, contact a qualified electrician. Do not attempt to modify the plug in any way.
- A short power supply cord is provided to reduce the risk resulting from becoming entangled in or tripping over a longer cord. An extension cord may be used if care is exercised in its use. If an extension cord is used, the marked electrical rating of the extension cord should be at least as great as the electrical rating of the appliance. The extension cord should be arranged so that it will not drape over the counter top or tabletop where it can be pulled on by children or tripped over unintentionally. If the appliance is of the grounded type, the cord set or extension cord should be a grounding-type 3-wire cord.
- Do not use outdoors.
- To disconnect, turn any control to "off," then remove the plug from the wall outlet.
- **WARNING:** To prevent electric shock, unplug before cleaning.
- When heating toaster pastries, always use the lightest toast color setting.
- For maintenance questions other than cleaning, please contact StoreBound directly at 1-800-898-6970 from 7AM - 7PM PST Monday - Friday or by email at support@bydash.com.

IMPORTANT SAFEGUARDS: PLEASE READ AND SAVE THIS INSTRUCTION AND CARE MANUAL.



Body

Toasting Slots
Cancel Button

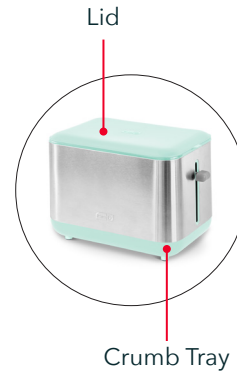
Browning Dial

Bagel Orientation

Lever

Bagel Button

+15 Seconds Button



Lid

Crumb Tray

BEFORE FIRST USE

- Remove all packaging material and stickers from your Toaster.
- Clean the appliance and all of its components prior to use.
- Make sure loose objects have not fallen inside the Toaster.
- In order to eliminate any manufacturing residues, press the Lever down without bread and set the Browning Dial to high. The appliance may give off some smoke while heating, which is perfectly normal.



A

- 1 Place the Toaster on a dry, stable surface and plug it in. Remove the Lid (**photo A**).

NOTE: When the Lid is on the Toaster, it triggers the Safety Switch so that the Toaster cannot power on. In order to use the Toaster, the Lid must be removed.



B

- 2 Add bread to Toasting Slots (**photo B**).



C

- 3 Turn the Browning Dial to your desired setting from light to dark (**photo C**).



D

- 4 Press the Lever down until it locks into place to start the heating process. (**photo D**). The bread and Lever will pop up automatically when toasting is complete.



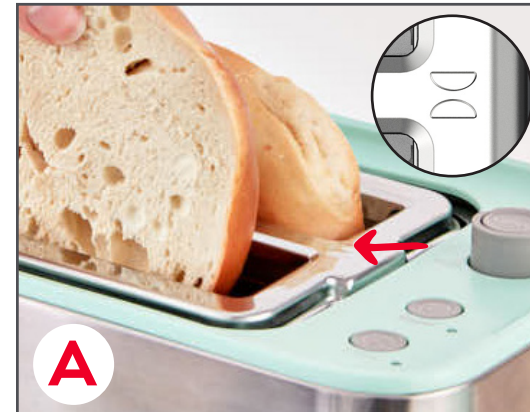
5 If desired, press the +15 Seconds Button to add cook time to your selected setting (**photo E**). An indicator light will illuminate to show that the button has been selected.

6 Touch the Cancel Button at any time to stop cooking and eject the bread from the Toasting Slots (**photo F**).

NOTE: Never insert your hands into the Toaster to remove food. Never use metal utensils to remove food from the Toaster.

TOASTING A BAGEL

- 1 When toasting a bagel, insert the bagel so that the flat edges face outward. This allows the inside of the bagel to toast without overcooking the outside (**photo A**).
- 2 Press the Lever down, then press the Bagel Button to begin toasting (**photo B**). An indicator light will illuminate to show that the button has been selected. If needed, press the Cancel or +15 Seconds Buttons at any time during cooking.



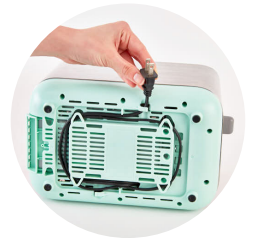
- Use the Warm Function to reheat or defrost bread, bagels or waffles.
- If the bread is too small to be removed from the Toasting Slot, simply lift the Lever to raise the carriage to its uppermost position and then remove the toasted bread. If you still cannot remove the bread, unplug your Toaster and use non-metal, heat-resistant tongs to remove the bread from the Toasting Slot.
- Do NOT touch the metal parts as they will be hot!
- For pop tarts or frozen waffles, toast as directed.
- ONLY toast food that is meant to be toasted in a slot toaster.
- If the Toaster jams, the bread might be too thick. Remove the bread from the Toaster and slice it thinly.



- Always unplug the appliance after use and allow it to cool completely before cleaning or storing.
- Do not use abrasive scrubbers, sponges, or chemical cleaners to clean your appliance as this may damage it.
- DO NOT submerge the Toaster in water. Use a damp cloth to wipe down the exterior of the Toaster.
- The Lid is top-rack dishwasher safe and can be cleaned in warm, soapy water.
- Make sure the Lid is dry and the Toaster has cooled before placing the Lid on the Toaster.
- Use the cord storage on the Base to wrap the cord before storing your Toaster.

CLEANING THE CRUMB TRAY

- Remove the Crumb Tray by sliding it out from the bottom of the Toaster.
- Wash the Tray with warm, soapy water. Rinse and dry thoroughly before returning the Tray to the Toaster.
- To avoid any lingering food odors, remove and clean the Crumb Tray after each use.



RECIPE IDEAS



Follow us!

@bydash | recipes, videos, & inspiration

@unprocessyourfood | veg & vegan-friendly meals



BRUSCHETTA

Toasted baguette, diced tomatoes, fresh basil, minced garlic, olive oil, and sea salt



STRAWBERRY NUTELLA

Toasted bread, Nutella, and sliced strawberries



LOX BAGEL

Toasted bagel, light cream cheese, lox, red onion, capers, and dill



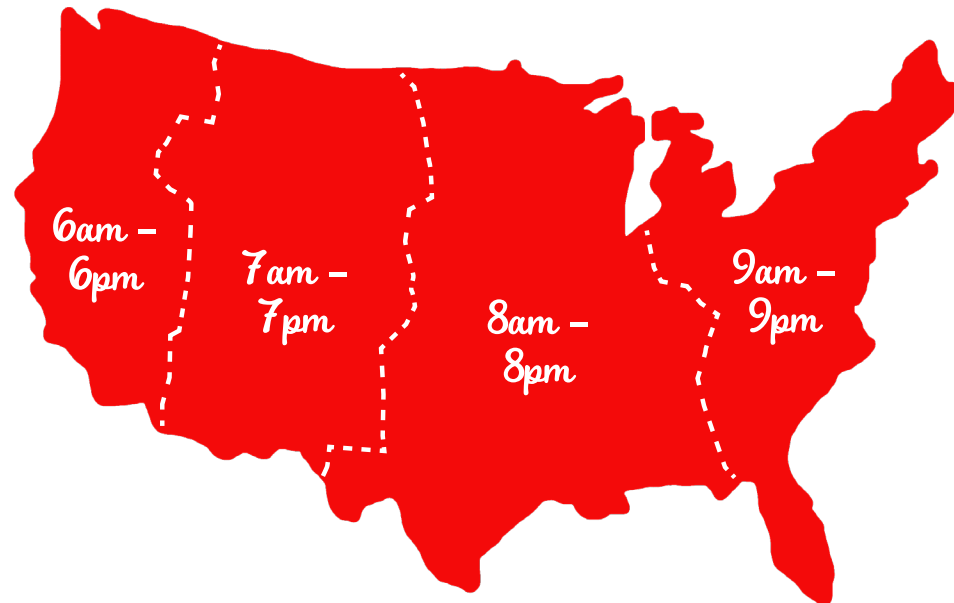
AVOCADO TOAST

Toasted baguette, mashed avocado, diced tomato, onion, salt, pepper, and a drizzle of olive oil

**FEEL GOOD
GUARANTEE™**

Dash values quality and workmanship and stands behind this product with our Feel Good Guarantee™. To learn more about our commitment to quality, visit bydash.com/feelgood.

Our customer support teams in the US and Canada are at your service Monday - Friday during the times below. Contact us at **1 (800) 898-6970** or support@bydash.com



Hey **Hawaii!** You can reach our customer service team from **5AM to 5PM**. And also, **Alaska**, feel free to reach out from **6AM to 6PM**.

STOREBOUND, LLC - 1 YEAR LIMITED WARRANTY

Your StoreBound product is warranted to be free from defects in material and workmanship for a period of one (1) year from the date of the original purchase when utilized for normal and intended household use. Should any defect covered by the terms of the limited warranty be discovered within one (1) year, StoreBound, LLC will repair or replace the defective part. To process a warranty claim, contact Customer Support at 1-800-898-6970 for further assistance and instruction. A Customer Support agent will assist you by troubleshooting minor problems. If troubleshooting fails to fix the problem, a return authorization will be issued. Proof of purchase indicating the date and place of purchase is required and should accompany the return. You must also include your full name, shipping address, and telephone number. We are unable to ship returns to a PO box. StoreBound will not be responsible for delays or unprocessed claims resulting from a purchaser's failure to provide any or all of the necessary information. Freight costs must be prepaid by the purchaser.

Send all inquiries to support@bydash.com.

There are no express warranties except as listed above.

Warranty is voided if used outside of the 50 states of the United States, the District of Columbia or the 10 provinces of Canada. Warranty is voided if used with an electric adapter/converter or used with any voltage plug other than 120V.

REPAIR OR REPLACEMENT AS PROVIDED UNDER THIS WARRANTY IS THE EXCLUSIVE REMEDY OF THE CUSTOMER. STOREBOUND SHALL NOT BE LIABLE FOR ANY INCIDENTAL OR CONSEQUENTIAL DAMAGES OR FOR BREACH OF ANY EXPRESS OR IMPLIED WARRANTY ON THIS PRODUCT EXCEPT TO THE EXTENT REQUIRED BY APPLICABLE LAW. ANY IMPLIED WARRANTY OF MERCHANTABILITY OR FITNESS FOR A PARTICULAR PURPOSE ON THIS PRODUCT IS LIMITED IN DURATION TO THE DURATION OF THIS WARRANTY.

Some states do not allow the exclusion or limitation of incidental or consequential damages, or limitations on how long an implied warranty lasts. Therefore, the above exclusions or limitations may not apply to you. This warranty gives you specific legal rights and you may also have other rights, which vary from state to state.

Refurbished items or items not purchased through an authorized retailer are not eligible for warranty claims.

REPAIRS

DANGER! Risk of electric shock! The Dash SmartStore™ 2-Slice Toaster is an electrical appliance.

Do not attempt to repair the appliance yourself under any circumstances.

Contact Customer Support regarding repairs to the appliance.

TECHNICAL SPECIFICATIONS

Voltage 120V ~ 60Hz
Power Rating 850W
Stock#: DST200_20210618_V6



This product has passed food safety testing in accordance with FDA guidelines.



1-800-898-6970 | @bydash | bydash.com