



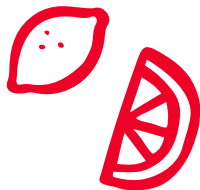
*recipes
inside!*

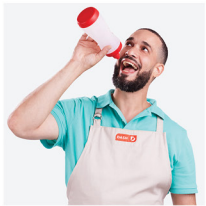


#JB065

DUAL CITRUS JUICER

Instruction Manual | Recipe Guide





DUAL CITRUS JUICER

- Important Safeguards..... 4-7
- Parts & Features 8-9
- Setting Up Your Citrus Juicer..... 10-11
- Using Your Citrus Juicer 12-13
- Cleaning & Maintenance 14
- Troubleshooting..... 15
- Recipe Ideas 16-21
- Customer Support 22
- Warranty..... 23

the dash team!

IMPORTANT SAFEGUARDS: PLEASE READ AND SAVE THIS INSTRUCTION AND CARE MANUAL.

When using electrical appliances, basic safety precautions should be followed, including:

- Read all instructions carefully.
- Remove all packaging and labels from appliance prior to use.
- To protect against risk of electrical shock do not put cord, plugs, or appliance in or near water or other liquid.
- This appliance is intended for household use only; please use only as instructed.
- The Citrus Juicer is exclusively designed to extract juice from citrus fruits.
- Keep appliance away from children when in use.
- The Citrus Juicer must not be used for commercial purposes.
- To guard against risk of electric shock, always remove the plug from the outlet rather than pulling on the cord.
- Do not use appliance in or near water or other liquid.
- Do not use the appliance if any parts are damaged.
- Turn the appliance OFF, then unplug from the outlet when not in use, before assembling or disassembling parts and before cleaning. To unplug, grasp the plug and pull from the outlet. Never pull from the power cord.
- Do not operate this appliance with a damaged cord, damaged plug, after the appliance malfunctions, is dropped, or damaged in any manner.
- For any maintenance other than cleaning, please contact StoreBound by phone at 1-800-898-6970 from 9AM - 9PM EST Monday - Friday or by email at support@storebound.com.
- Use only Citrus Juicer attachments recommended or sold by StoreBound. Others may result in fire, electric shock, or injury.
- Do not place on or near a hot gas burner, hot electric burner, or in a heated oven.

- Do not leave unattended when appliance is running.
- Do not use outdoors.
- Do not let the cord hang over edge of table, hang over the sink, or touch hot surfaces.
- Avoid contact with moving parts.
- Only use the Citrus Juicer on a stable surface.
- Be certain Lid and Cones are securely in place before using the appliance.
- When cleaning the Base do not submerge in any liquid. Instead use a soft damp cloth to wipe down.
- Do not put the appliance in the refrigerator.
- This appliance is not intended
- This appliance can be used by persons with reduced physical, sensory or mental capabilities or lack of experience and knowledge, if they have been given supervision or instruction concerning use of the appliance in a safe way and understand the hazards involved.
- The appliance is not a toy. Do not let children use this appliance. Close supervision is necessary when any kitchen appliance is used by or near children.
- Always be sure to turn off the appliance prior to assembly, disassembly, cleaning and storage.
- This appliance has a polarized plug (one blade is wider than the other). To reduce the risk of electric shock, this plug will fit in a polarized outlet only one way. If the plug does not completely fit in the outlet, reverse the plug. If it still does not fit, contact a qualified electrician. Do not attempt to modify the plug in any way.

IMPORTANT SAFEGUARDS: PLEASE READ AND SAVE THIS INSTRUCTION AND CARE MANUAL.

CONSIGNES DE SÉCURITÉ IMPORTANTES: VEUILLEZ LIRE ET CONSERVER CE MANUEL D'INSTRUCTIONS ET D'ENTRETIEN.

Lors de l'utilisation d'appareils électriques, les mesures de sécurité de base doivent être suivies, notamment:

- Lisez attentivement toutes les instructions.
- Retirez tous les emballages et les étiquettes de l'appareil avant de l'utiliser.
- Afin de prévenir tout risque d'incendie, de choc électrique, ou de blessures corporelles, ne placez pas le cordon, la prise, ou l'appareil près d'eau ou d'autres liquides.
- Cet appareil est destiné à un usage domestique uniquement; veuillez utiliser uniquement selon les instructions.
- Le Presse-Agrumes est conçu exclusivement pour extraire le jus d'agrumes.
- Gardez l'appareil à l'écart des enfants pendant l'utilisation.
- Le Presse-Agrumes ne doit pas être utilisé à des fins commerciales.
- Pour éviter tout risque de choc électrique, retirez toujours la fiche de la prise plutôt que de tirer sur le cordon.
- N'utilisez pas l'appareil dans de l'eau ou près d'eau ou d'autres liquides.
- Ne pas utiliser l'appareil si des pièces sont endommagées.
- Éteignez l'appareil, puis débranchez-le de la prise lorsqu'il n'est pas utilisé, avant d'assembler ou de désassembler des pièces et avant de le nettoyer. Pour débrancher, saisissez la fiche et retirez-la de la prise. Ne tirez jamais sur le cordon d'alimentation.
- Ne faites pas fonctionner cet appareil avec une fiche endommagée, après un dysfonctionnement de l'appareil, une chute ou un endommagement quelconque.
- Pour tout entretien autre que le nettoyage, veuillez contacter StoreBound par téléphone au 1-800-898-6970 de 9h00 à 21h00 (HNE) du lundi au vendredi ou par courrier électronique à support@storebound.com.
- Utilisez uniquement les accessoires pour le Presse-Agrume recommandés ou vendus par StoreBound. D'autres peuvent provoquer un incendie, un choc électrique ou des blessures.

- Ne placez pas l'appareil sur ou près d'une source de chaleur telle que: brûleur au gaz ou électrique chaud, ou dans un four chauffé.
- Ne pas laisser l'appareil sans surveillance lorsqu'il est en marche.
- Ne pas utiliser à l'extérieur.
- Ne laissez pas le cordon pendre au bord d'une table, dans un évier, ou toucher une surface chaude.
- Évitez tout contact avec les pièces en mouvement.
- N'utilisez les Presse-Agrumes que sur une surface stable
- Soyez certain que le Couvercle et les Cônes sont bien en place avant d'utiliser l'appareil.
- Lors du nettoyage de la Base, ne pas immerger dans un liquide. Essayez-le plutôt avec un chiffon doux et humide.
- Ne mettez pas l'appareil au réfrigérateur.
- Cet appareil peut être utilisé par des personnes dont les capacités physiques, sensorielles ou mentales sont réduites

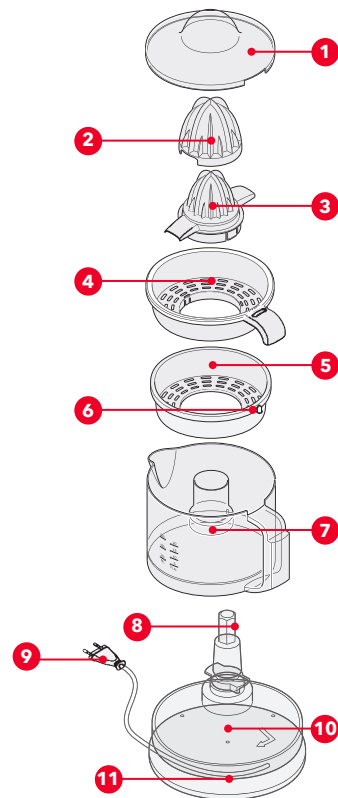
ou qui manquent d'expérience et de connaissances, à condition qu'elles aient reçu une supervision ou des instructions concernant l'utilisation de l'appareil en toute sécurité et qu'elles comprennent les risques encourus.

- Cet appareil n'est pas un jouet. Ne laissez pas d'enfants utiliser cet appareil. Une étroite surveillance est nécessaire lorsqu'un appareil est utilisé par ou à proximité d'enfants.
- Veuillez toujours à éteindre l'appareil avant l'assemblage, le démontage, le nettoyage et le stockage.
- Cet appareil est muni d'une fiche polarisée (une lame est plus large que l'autre). Afin de réduire le risque de choc électrique, cette fiche ne peut être insérée dans une prise polarisée que d'une seule façon. Si la fiche ne rentre pas complètement dans la prise, retournez-la. Si elle ne rentre toujours pas, contactez un électricien qualifié. N'essayez pas de modifier la fiche de quelque façon que ce soit.

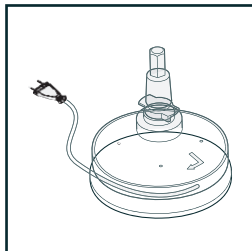
CONSIGNES DE SÉCURITÉ IMPORTANTES: VEUILLEZ LIRE ET CONSERVER CE MANUEL D'INSTRUCTIONS ET D'ENTRETIEN.

PARTS & FEATURES

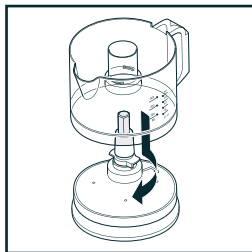
1. Lid
2. Large Juicer Cone
3. Small Juicer Cone
4. Upper Screen
5. Bottom Screen
6. Screen Opener
7. Juice Container
8. Drive Axle
9. Power Cable with Main Plug
10. Base
11. Cable Wrap



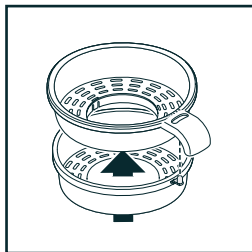
SETTING UP YOUR CITRUS JUICER



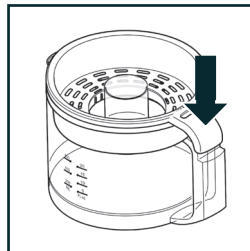
- 1 Uncoil the Power Cable from the Cable Wrap to the desired length. Place the Base on a dry, solid and level surface.



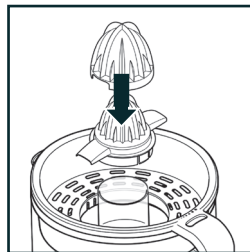
- 2 Place the Juice Container onto the Base with the handle above the arrow. Turn the Juice Container clockwise until it locks into place.



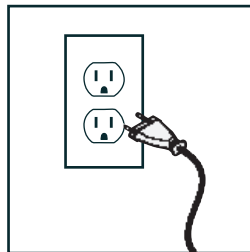
- 3 Place the Upper Screen on the Bottom Screen so that the Screen Opener sticks through the opening and the screens lock into place.



- 1 Place the assembled Screen on the Juice Container so that the handles fit perfectly one on top of the other.



- 2 Place the Small Juicer Cone on the Drive Axle. In the process, the Small Juicer Cone must lock into the Screen. For large citrus fruits (e.g. oranges, grapefruit), place the Large Juicer Cone on the Small Juicer Cone so that the wings of the Small Juicer Cone fit into the recesses of the Large Juicer Cone.



- 3 Insert the Main Plug into a wall socket corresponding to the technical data.

Note: You can easily wind-up the Power Cable in the Cable Wrap.

Always remember to use fresh, washed fruit. Always ensure that nothing is on the Screen or in the Citrus Juicer before operating.

- Cut the citrus fruits in half.
- Exert slight pressure on the half of the citrus fruit when pushing the cut surface down onto the Juicer Cone. Be sure not to put excessive pressure on the Juicer Cone. The Cones will start turning and the juice will begin to flow into the Juice Container. Once the juice reaches the 600 ml mark, empty the Juice Container. Never exceed the 600 ml mark.

Note: As soon as you stop pressing on the Juicer Cone, the Citrus Juicer will stop.

- Unplug the Citrus Juicer before removing the Juice Container from the Base.
- Turn the Juice Container counterclockwise and lift from the base. Pour the juice out of the Juice Container. Make sure to clean the appliance after each use as soon as possible so that the pulp does not dry and stick to the surface.

TIPS AND TRICKS

- You can influence the amount of pulp content in your juice by using the Screen Opener. For a high pulp content, set the screen opener to the large dot mark so that the openings in the screen are open wide.
- In order to achieve the largest juice yield possible, the Juicer Cone will change direction of rotation after several starts and stops.
- If the Juicer Cone is not turning, check if there are fruit pips/seeds between the Juicer Cone and the Screen and remove them.



Note: Make sure to clean the Citrus Juicer after each use as soon as possible so that the pulp does not dry and stick to the surface.



WARNING: Do not submerge the Base, Power Cable and Main Plug in water or any liquid, the Base is not dishwasher safe.

DISASSEMBLY

1. Unplug the Citrus Juicer before cleaning.
2. Remove the Lid, Juicer Cones and Screens.
3. Exert slight pressure on the Screen Opener to disassemble.
4. Turn the Juice Container counterclockwise and lift from the Base.
5. Wipe the Base down with a damp cloth.
6. Wash all removable accessories by hand. Make sure to wash the small cavity in the handle with a sufficient amount of hot (not boiling) water.
7. Dry all parts carefully, before reassembling the appliance and storing it.

CLEANING

- The Base, Power Cable with Main Plug must NEVER be immersed in water or any other liquid.
- Never use boiling water to clean the Citrus Juicer.

If your appliance fails to function as required, please reference this chart first. Perhaps there is only a minor problem that you can solve yourself.

ISSUE	SOLUTION
The Citrus Juicer does not function.	<ol style="list-style-type: none"> 1. Check to see if your appliance is connected to a working power outlet.
The Juicer Cone stopped turning.	<ol style="list-style-type: none"> 1. Try using a little extra pressure when pressing down on the Juicer Cone. 2. Check to see if there is anything on top of the Screen. 3. Check if fruit seeds/pips have been caught between the Juicer Cones and the Screen.



RECIPE GUIDE



Follow us!

@bydash | recipes, videos, & inspiration

@unprocessyourfood | veg & vegan-friendly meals



BLOOD ORANGE

2 blood oranges
4 oranges

ORANGE GRAPEFRUIT

3 grapefruits
5 oranges

RASPBERRY LEMONADE

1 cup raspberry tea
3 lemons





SWEET N' SOUR

2 limes
4 ripe oranges

MINT LIME

3 sprigs mint
2 limes
sparkling water

ORANGEADE

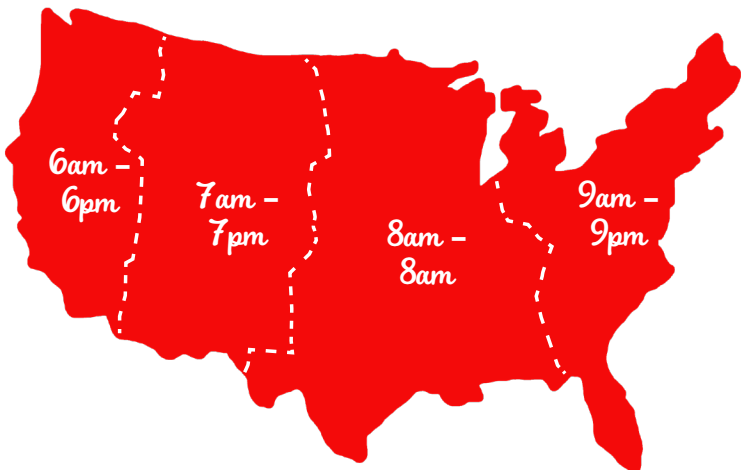
2 lemons
5 oranges
agave



**FEEL GOOD
GUARANTEE™**

Dash values quality and workmanship and stands behind this product with our Feel Good Guarantee™. To learn more about our commitment to quality, visit bydash.com/feelgood.

Our customer support teams in the US and Canada are at your service Monday - Friday during the times below. Contact us at **1 (800) 898-6970** or support@bydash.com



Hey **Hawaii!** You can reach our customer service team from **3AM to 3PM**. And also, **Alaska**, feel free to reach out from **5AM - 5PM**.

STOREBOUND, LLC - 1 YEAR LIMITED WARRANTY

Your StoreBound product is warranted to be free from defects in material and workmanship for a period of one (1) year from the date of the original purchase when utilized for normal and intended household use. Should any defect covered by the terms of the limited warranty be discovered within one (1) year, StoreBound, LLC will repair or replace the defective part. To process a warranty claim, contact Customer Support at 1-800-898-6970 for further assistance and instruction. A Customer Support agent will assist you by troubleshooting minor problems. If troubleshooting fails to fix the problem, a return authorization will be issued. Proof of purchase indicating the date and place of purchase is required and should accompany the return. You must also include your full name, shipping address, and telephone number. We are unable to ship returns to a PO box. StoreBound will not be responsible for delays or unprocessed claims resulting from a purchaser's failure to provide any or all of the necessary information. Freight costs must be prepaid by the purchaser.

Send all inquiries to support@bydash.com. There are no express warranties except as listed above.

REPAIR OR REPLACEMENT AS PROVIDED UNDER THIS WARRANTY IS THE EXCLUSIVE REMEDY OF THE CUSTOMER. STOREBOUND SHALL NOT BE LIABLE FOR ANY INCIDENTAL OR CONSEQUENTIAL DAMAGES OR FOR BREACH OF ANY EXPRESS OR IMPLIED WARRANTY ON THIS PRODUCT EXCEPT TO THE EXTENT REQUIRED BY APPLICABLE LAW. ANY IMPLIED WARRANTY OF MERCHANTABILITY OR FITNESS FOR A PARTICULAR PURPOSE ON THIS PRODUCT IS LIMITED IN DURATION TO THE DURATION OF THIS WARRANTY.

Some states do not allow the exclusion or limitation of incidental or consequential damages, or limitations on how long an implied warranty lasts. Therefore, the above exclusions or limitations may not apply to you. This warranty gives you specific legal rights and you may also have other rights, which vary from state to state.

REPAIRS

DANGER! Risk of electric shock! The Dash Dual Citrus Juicer is an electrical appliance. Do not attempt to repair the appliance yourself under any circumstances. Contact Customer Support regarding repairs to the appliance.

TECHNICAL SPECIFICATIONS

Voltage 120V ~ 60Hz
Power Rating 25W
Stock#: JB065_20180323_V12



This product has passed food safety testing in accordance with FDA guidelines.



1-800-898-6970 | @bydash | bydash.com