



DCBM10S

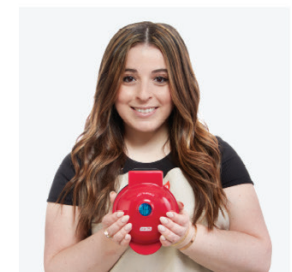
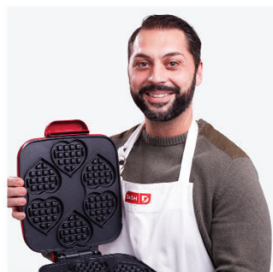
BREW2GO™ PORTABLE COLD BREW SYSTEM

Instruction Manual | Recipe Guide



WELCOME TO THE FOODIE FAMILY

We hope you *love* our
products as much as
our team does.





BREW2GO™ PORTABLE COLD BREW SYSTEM

Important Safeguards.....4-5

Parts & Features.....6-7

Using the Brew2Go™.....8-11

Cleaning & Maintenance.....12

Troubleshooting.....13

Recipe Guide.....15-21

Customer Support.....22

Warranty.....23

IMPORTANT SAFEGUARDS

IMPORTANT SAFEGUARDS: PLEASE READ AND SAVE THIS INSTRUCTION AND CARE MANUAL.

When using electrical appliances, basic safety precautions should always be followed, including:

- Read all instructions.
- Remove all bags and packaging from appliance before use.
- Never leave appliance unattended when in use.
- Make sure the appliance is cleaned thoroughly before using.
- Do not use appliance for other than intended use. For household use only. Do not use outdoors.
- Do not operate this appliance with a damaged cord, damaged plug, after the appliance malfunctions, is dropped, or damaged in any manner.
- For maintenance other than cleaning, please contact StoreBound directly at 1-800-898-6970 Monday-Friday or by email at support@bydash.com.
- Never use abrasive cleaning agents to clean your Dash Brew2Go™ Portable Cold Brew System.
- To prevent the risk of fire, electric shock, or personal injury, do not put cord, plug, or appliance in or near water or other liquids.
- Do not place appliance on or near a hot gas burner, hot electric burner, or in a heated oven.
- Refrain from using attachments that are not recommended by the appliance manufacturer, as this may result in fire, electric shock, or personal injury.
- Do not let the cord touch hot surfaces or hang over the edge of tables or counters.
- This appliance can be used by persons with reduced physical, sensory or mental capabilities or lack of experience and knowledge, if they have been given supervision or instruction concerning use of the appliance in a safe way and understand the hazards involved.
- The appliance is not a toy. Do not let children use this appliance. Close supervision is necessary when any kitchen appliance is used by or near children.
- Always be sure to unplug the appliance from outlet prior to moving, cleaning, storage, and when not in use.
- StoreBound shall not accept liability for damages caused by improper use of the appliance.
- This appliance has a polarized plug (one blade is wider than the other). To reduce the risk of electric shock, this plug will fit in a polarized outlet only one way. If the plug does not completely fit in the outlet, reverse the plug. If it still does not fit, contact a qualified electrician. Do not attempt to modify the plug in any way.
- A short power supply cord is provided to reduce the risk resulting from becoming entangled in or tripping over a longer cord. An extension cord may be used if care is exercised in its use. If an extension cord is used, the marked electrical rating of the extension cord should be at least as great as the electrical rating of the appliance. The extension cord should be arranged so that it will not drape over the countertop or tabletop where it can be pulled on by children or tripped over unintentionally.

GARANTIES IMPORTANTES: VEUILLEZ LIRE ATTENTIVEMENT CE MANUEL AVANT D'UTILISER L'APPAREIL.

L'utilisation d'appareils électriques nécessite de prendre des mesures de sécurité de base, y compris:

- Lisez toutes les instructions.
- Retirez tous les sacs et emballages de l'appareil avant de l'utiliser.
- Ne laissez jamais l'appareil sans surveillance lorsqu'il est en marche.
- Assurez-vous de nettoyer l'appareil soigneusement avant de l'utiliser.
- N'utilisez pas l'appareil à des fins autres que celles prévues. Pour un usage domestique uniquement. Ne l'utilisez pas à l'extérieur.
- N'utilisez pas l'appareil si le câble ou la fiche sont endommagés, après un dysfonctionnement ou une chute ou encore un dommage quelconque de l'appareil.
- Pour tous travaux de maintenance autre que le nettoyage, veuillez contacter StoreBound directement au 1-800-898-6970, de lundi à vendredi, ou par courriel à l'adresse support@bydash.com.
- N'utilisez jamais d'agents nettoyants corrosifs pour nettoyer votre Cafetière infusion à froid rapide Dash.
- Pour éviter tout risque d'incendie, de choc électrique ou de blessure, ne mettez pas le cordon, la fiche ou l'appareil dans l'eau ou d'autres liquides ou à proximité de ces derniers.
- Évitez de placer l'appareil sur ou près d'un chauffage électrique ou au gaz chaud, ou dans un four chauffé.
- Utilisez uniquement des accessoires recommandés par le fabricant de l'appareil pour éviter tout risque d'incendie, de choc électrique ou de blessures.
- Ne laissez pas le cordon toucher des surfaces chaudes ou pendre de la table ou du comptoir.
- Cet appareil peut être utilisé par des personnes dont les capacités physiques, sensorielles ou mentales sont réduites ou qui manquent d'expérience et de connaissances, à condition qu'elles aient reçu une supervision ou des instructions concernant l'utilisation de l'appareil en toute sécurité et qu'elles comprennent les risques encourus.
- L'appareil n'est pas un jouet. Ne laissez pas d'enfants utiliser cet appareil. Une étroite surveillance est nécessaire lorsqu'un appareil est utilisé par ou à proximité d'enfants.
- Assurez-vous de toujours débrancher l'appareil de la prise avant de le déplacer, le nettoyer et le ranger ainsi que lorsque vous ne l'utilisez pas.
- StoreBound ne peut être tenu responsable de tout dommage résultant d'un usage abusif de l'appareil.
- Cet appareil est équipé d'une fiche polarisée (une lame est plus large que l'autre). Pour réduire le risque de décharge électrique, cette fiche est conçue pour ne pouvoir s'insérer dans une prise polarisée que dans un sens. Si la fiche n'entre pas complètement dans la prise, inversez-la. Si elle n'entre toujours pas, contactez un électricien qualifié. N'essayez pas d'altérer la fiche de quelque façon que ce soit.
- Un cordon d'alimentation court est fourni pour réduire les risques d'enchevêtrement ou de trébuchement. Une rallonge peut être utilisée avec prudence. En cas d'utilisation d'une rallonge, la puissance électrique indiquée sur la rallonge doit être au moins aussi grande que la puissance électrique de l'appareil. La rallonge doit être placée de telle sorte qu'elle ne soit pas étalée sur le comptoir ou la table, où elle pourrait être tirée par un enfant ou causer un trébuchement.

PARTS & FEATURES



Motor Cover



Power Button / Indicator Light
Brew cycle begins once pressed.

Power Port
Attach USB Cord to charge the unit.

Motor



Coffee Filter Cylinder



Cylinder Extender



Max Line
The maximum water level for 1.5 cups of Cold Brew.

Portable Cup

PARTS & FEATURES



Silicone Straw



Cleaning Brush



Travel Lid



Precision Scoop



USB Cord

SETTING UP THE BREW2GO™



SETTING UP THE BREW2GO™

BEFORE FIRST USE

Before first use, remove all packaging material. Then thoroughly clean the Brew2Go™ Portable Cold Brew System and wipe down all parts with a moist cloth. **Prior to brewing, ensure the unit is fully charged.** Use the included USB Cord to charge, taking note that once the light stops blinking, the unit is fully charged.

SETTING UP THE BREW2GO™

- 1** Remove everything from the Portable Cup. For 1.5 cups of cold brew, fill the Cup with room temperature water to the MAX line **(photo A)**. Do not exceed the line and do not use hot water.
- 2** Disassemble the Cylinders. Use the Precision Scoop to add three scoops of coffee grounds to the Coffee Filter Cylinder or fill it to the top **(photo B)**.
- 3** Attach the two Cylinders together **(photo C)**. Then twist to attach the Cylinder Extender to the Motor Unit **(photo D)**. Set aside.
- 4** Twist to attach the Motor Cover to the Portable Cup **(photo E)**. Then insert the other assembled pieces into the top of the Motor Cover **(photo F)**.



USING THE BREW2GO™



USING THE BREW2GO™

- 1 Once assembled and set up, begin brewing by pressing the Power Button on the Motor **(photo A)**. The Indicator Light will turn on **(photo B)** and the brewing process will begin.

NOTE!



When the unit is low on battery, the light will begin blinking. For best results, do not brew while the unit is low on battery.

- 2 When brewing is complete, the Indicator Light will turn off **(photo C)**. A typical brewing cycle will last about 10-15 minutes. However, depending on preference and recipe, the cold brew may be at desired intensity before the brewing cycle completes. To stop brewing and end the cycle, simply press the Power Button.

- 3 When finished brewing, remove all parts from the Cup and disassemble **(photos D & E)**. Install the Travel Lid on the Portable Cup and turn clockwise to secure **(photo F)**.

NOTE!



If residual water remains in the Coffee Filter Cylinder after brewing is complete, press and hold the Power button to drain the water.



Chef Tip!

Use the Brew2Go™ to make fresh tea, too! Follow the instructions for making cold brew, but replace the ground coffee with preferred loose-leaf tea.

CLEANING & MAINTENANCE

The Brew2Go™ Portable Cold Brew System is NOT dishwasher safe. Clean all parts by hand with soap and water. Make sure all parts are dry before storing.



CLEANING THE COFFEE CYLINDER

Use the included Cleaning Brush to properly clean the Cylinders (photo A).

CHARGING THE BREW2GO™

Easily attach the magnetized USB Cord to the Motor to charge the product (Photo B). When charging is complete, the Indicator Light will turn off. When battery is low, Indicator Light will flash to signal need for recharge.

TROUBLESHOOTING

PROBLEM	SOLUTION
Why does the brew taste weak?	Before use, make sure the unit is fully charged and has a minimum of one cup of water for optimal brewing results.
There's water spraying out of the unit. How do I get it to stop?	Ensure that both Cylinders are properly cleaned.
The Indicator Light keeps flashing. What does that mean?	The unit is low on battery. Use the USB Cord to fully charge the unit.
Coffee grounds have ended up inside the Cup.	Check to make sure the Coffee Filter Cylinder isn't damaged. If there is damage, please consult Customer Service to receive replacement parts.
The unit keeps blowing air and bubbling water. How do I get it to stop?	Ensure that both Cylinders are properly cleaned.



DASH IT

MAX

RECIPE GUIDE



Follow us!

@bydash | recipes, videos, & inspiration

@unprocessyourfood | veg & vegan-friendly meals



ICED OAT MILK LATTE

Prep Time: 5-15 minutes • Serves: 1

Ingredients:

1 cup water	Ice
2-3 tablespoons oat milk	1-2 tablespoons sweetener of choice
3 Precision Scoops of preferred coffee grounds	

Directions:

1. Fill the Brewing Cup with 1 cup of water and 2-3 tablespoons of oat milk.
2. Scoop coffee grounds into the Filter Cylinder of the Brew2Go Cold Brew Maker. Finish assembling the Brewing Apparatus as per instructions.
3. Once assembled, press the Brewing Button to begin brewing. Brew for 3-5 minutes, taking note that the Brewing Cycle will continue until the Brewing Button is pressed to stop it. For a stronger brew, feel free to brew for the entire Brewing Cycle, about 12-15 minutes.
4. When brewing is complete, remove the Motor and the Brewing Apparatus and set aside for cleaning.
5. In the Brewing Cup, add sweetener and more oat milk if desired. Stir to combine then add ice.
6. Serve, sip, savor, and sew your oats!



COCONUT CARAMEL ICED SHAKERATO

Prep Time: 5-15 minutes • Serves: 1

Ingredients:

1 cup water	1-2 tablespoons caramel syrup
2-3 tablespoons coconut milk	Ice
3 Precision Scoops of preferred coffee grounds	Toasted coconut flakes (optional)

Directions:

1. Fill the Brewing Cup with 1 cup of water and 2-3 tablespoons of oat milk.
2. Scoop coffee grounds into the Filter Cylinder of the Brew2Go Cold Brew Maker. Finish assembling the Brewing Apparatus as per instructions.
3. Once assembled, press the Brewing Button to begin brewing. Brew for 3-5 minutes, taking note that the Brewing Cycle will continue until the Brewing Button is pressed to stop it. For a stronger brew, feel free to brew for the entire Brewing Cycle, about 12-15 minutes.
4. When brewing is complete, remove the Motor and the Brewing Apparatus and set aside for cleaning.
5. In the Brewing Cup, add caramel syrup and more coconut milk if desired. Stir to combine then add ice. Top with toasted coconut flakes if desired.
6. Serve and go nuts!



PUMPKIN SPICE ICED LATTE

Prep Time: 5-15 minutes • Serves: 1

Ingredients:

1 cup water	½ teaspoon vanilla
2-3 tablespoons milk of choice	Pinch of pumpkin pie spice
3 Precision Scoops of preferred coffee grounds	1-2 tablespoons sweetener of choice
1 tablespoon pumpkin puree	Ice

Directions:

1. Fill the Brewing Cup with 1 cup of water and 2-3 tablespoons of oat milk.
2. Scoop coffee grounds into the Filter Cylinder of the Brew2Go Cold Brew Maker. Finish assembling the Brewing Apparatus as per instructions.
3. Once assembled, press the Brewing Button to begin brewing. Brew for 3-5 minutes, taking note that the Brewing Cycle will continue until the Brewing Button is pressed to stop it. For a stronger brew, feel free to brew for the entire Brewing Cycle, about 12-15 minutes.
4. When brewing is complete, remove the Motor and the Brewing Apparatus and set aside for cleaning.
5. In the Brewing Cup, add pumpkin puree, vanilla, pumpkin pie spice, sweetener, and more milk if desired. Stir to combine then add ice.
6. Serve and enjoy this cozy fall fave!





ICED MEXICAN CHOCOLATE LATTE

Prep Time: 5-15 minutes • Serves: 1

Ingredients:

1 cup water	2 teaspoons cocoa powder
2-3 tablespoons milk of choice	Pinch cayenne pepper
3 Precision Scoops of preferred coffee grounds	Pinch cinnamon
1-2 tablespoons maple syrup	Ice

Directions:

1. Fill the Brewing Cup with 1 cup of water and 2-3 tablespoons of oat milk.
2. Scoop coffee grounds into the Filter Cylinder of the Brew2Go Cold Brew Maker. Finish assembling the Brewing Apparatus as per instructions.
3. Once assembled, press the Brewing Button to begin brewing. Brew for 3-5 minutes, taking note that the Brewing Cycle will continue until the Brewing Button is pressed to stop it. For a stronger brew, feel free to brew for the entire Brewing Cycle, about 12-15 minutes.
4. When brewing is complete, remove the Motor and the Brewing Apparatus and set aside for cleaning.
5. In the Brewing Cup, add maple syrup, cocoa powder, spices, and more milk if desired. Stir to combine then add ice.
6. Serve and go loco for cocoa!



VEGAN CINNAMON MOCHA LATTE

Prep Time: 5-15 minutes • *Serves:* 1

Ingredients:

2-3 tablespoons non-dairy milk	½ teaspoon cinnamon
1 cup water	¼ teaspoon cloves
3 Precision Scoops of preferred coffee grounds	Ice
1 tablespoon chocolate syrup	Non-dairy whipped cream (optional)

Directions:

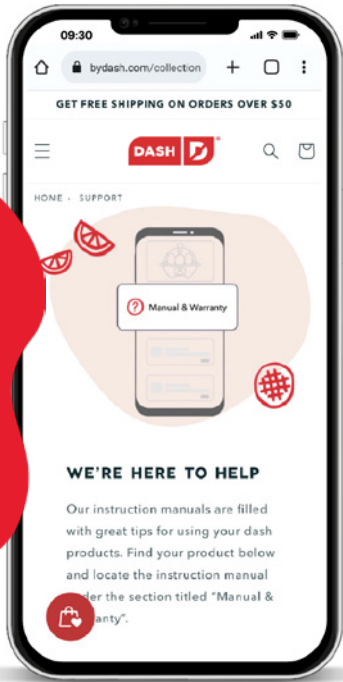
1. Fill the Brewing Cup with 1 cup of water and 2-3 tablespoons of oat milk.
2. Scoop coffee grounds into the Filter Cylinder of the Brew2Go Cold Brew Maker. Finish assembling the Brewing Apparatus as per instructions.
3. Once assembled, press the Brewing Button to begin brewing. Brew for 3-5 minutes, taking note that the Brewing Cycle will continue until the Brewing Button is pressed to stop it. For a stronger brew, feel free to brew for the entire Brewing Cycle, about 12-15 minutes.
4. When brewing is complete, remove the Motor and the Brewing Apparatus and set aside for cleaning.
5. In the Brewing Cup, add chocolate syrup, spices, and more non-dairy milk if desired. Stir to combine then add ice.
6. Top with whipped cream to serve and savor this sweet treat!

CUSTOMER SUPPORT



We want you to Feel Good about your Dash products! Sign up for our Feel Good Rewards program at bydash.com/feelgood to **DOUBLE** your warranty, part of our commitment to quality and customer satisfaction.

We're here to help! Our customer support teams in the US and Canada are at your service Monday - Friday. Contact us at **1 (800) 898-6970** or support@bydash.com.



STOREBOUND, LLC - 1 YEAR LIMITED WARRANTY

Your StoreBound product is warranted to be free from defects in material and workmanship for a period of one (1) year from the date of the original purchase when utilized for normal and intended household use. Should any defect covered by the terms of the limited warranty be discovered within one (1) year, StoreBound, LLC will repair or replace the defective part. To process a warranty claim, contact Customer Support at support@bydash.com for further assistance and instruction. A Customer Support agent will assist you by troubleshooting minor problems. If troubleshooting fails to fix the problem, a return authorization will be issued. Proof of purchase indicating the date and place of purchase is required and should accompany the return. You must also include your full name, shipping address, and telephone number. StoreBound will not ship to a PO Box. StoreBound will not be responsible for delays or unprocessed claims resulting from a purchaser's failure to provide any or all of the necessary information. Freight costs must be prepaid by the purchaser.

All replacement inquiries are to be submitted to support@bydash.com or contact Customer Support at 1-800-898-6970. There are no express warranties except as listed above.

Warranty is voided if used outside of the 50 states of the United States, the District of Columbia or the 10 provinces of Canada. Warranty is voided if used with an electric adapter/converter or used with any voltage plug other than 120V.

REPAIR OR REPLACEMENT AS PROVIDED UNDER THIS WARRANTY IS THE EXCLUSIVE REMEDY OF THE CUSTOMER. STOREBOUND SHALL NOT BE LIABLE FOR ANY INCIDENTAL OR CONSEQUENTIAL DAMAGES OR FOR BREACH OF ANY EXPRESS OR IMPLIED WARRANTY ON THIS PRODUCT EXCEPT TO THE EXTENT REQUIRED BY APPLICABLE LAW. ANY IMPLIED WARRANTY OF MERCHANTABILITY OR FITNESS FOR A PARTICULAR PURPOSE ON THIS PRODUCT IS LIMITED IN DURATION TO THE DURATION OF THIS WARRANTY.

Some states do not allow the exclusion or limitation of incidental or consequential damages, or limitations on how long an implied warranty lasts. Therefore, the above exclusions or limitations may not apply to you. This warranty gives you specific legal rights and you may also have other rights, which vary from state to state.

Refurbished items or items not purchased through an authorized retailer are not eligible for warranty claims.

REPAIRS

DANGER! Risk of electric shock! The Dash Brew2Go™ Portable Cold Brew System is an electrical appliance. Do not attempt to repair the appliance yourself under any circumstances. Contact Customer Support regarding repairs to the appliance.

TECHNICAL SPECIFICATIONS

Power Source: DC5V/1A

Power: 3.7V

Wattage: 2W

Stock#: DCBM10S_20241007_V4

Made in China



1-800-898-6970 | @bydash | bydash.com