



*recipes  
inside!*



#DCSJ255

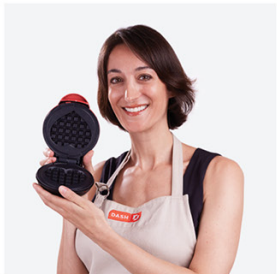
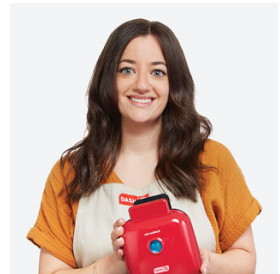
# DELUXE COMPACT COLD PRESS POWER JUICER

Instruction Manual | Recipe Guide

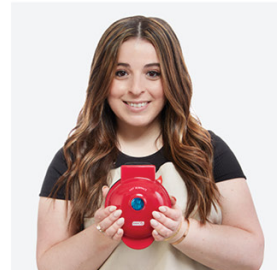
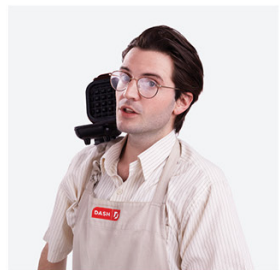




# DELUXE COMPACT COLD PRESS POWER JUICER



- Important Safeguards.....4-6
- Parts & Features.....7-8
- Setting Up Your Deluxe Cold Press Power Juicer.....9-11
- Using Your Deluxe Cold Press Power Juicer.....13-15
- Using Your Frozen Attachment.....16
- Cleaning & Maintenance.....18-20
- Tips & Tricks.....21
- Recipes.....23-31
- Notes .....32-33
- Customer Support.....34
- Warranty.....35



*the dash team!*

## IMPORTANT SAFEGUARDS: PLEASE READ AND SAVE THIS INSTRUCTION AND CARE MANUAL.

When using electrical appliances, basic safety precautions should be followed, including:

- Read all instructions before use.
- Remove all bags and packaging from appliance before use.
- Never leave appliance unattended when in use.
- Make sure the appliance is cleaned thoroughly before using.
- Do not use appliance for other than intended use. For household use only. Do not use outdoors.
- Only use the appliance on a stable, dry surface.
- **ATTENTION:** This appliance cannot be used with an external timer or a separate remote control.
- Do not place appliance on or near a hot gas burner, hot electric burner, or in a heated oven.
- This appliance can be used by persons with reduced physical, sensory, or mental capabilities or lack of experience or knowledge, if they have been given supervision or instruction concerning use of the appliance in a safe way and understand the hazards involved.
- This appliance is not a toy. Do not let children use this appliance. Close supervision is necessary when any kitchen appliance is used by or near children.
- To prevent the risk of fire, electric shock, or personal injury, do not put cord, plug, or appliance in or near water or other liquids. The Juicer is NOT dishwasher safe.
- Do not let the cord touch hot surfaces or hang over the edge of tables or counters.
- Refrain from using attachments that are not recommended by the appliance manufacturer, as this may result in fire, electric shock, or personal injury.
- Never let the machine work for longer than 20 minutes at a time.
- Unplug the appliance prior to assembly/disassembly, moving, cleaning, storage, and when not in use. To unplug, grasp the plug and pull from the outlet. Never pull from the power cord.
- Do not operate this appliance with a damaged cord, damaged plug, after the appliance malfunctions, is dropped, or damaged in any manner. Return appliance to the nearest authorized service facility for examination, repair, or adjustment.
- For maintenance other than cleaning, please contact StoreBound directly at 1-800-898-6970 Monday - Friday or by email at support@bydash.com.
- StoreBound shall not accept liability for damages caused by improper use of the appliance.
- Improper use of the appliance can result in property damage or even in personal injury.
- This appliance has a polarized plug (one blade is wider than the other). To reduce the risk of electric shock, this plug will fit in a polarized outlet only one way. If the plug does not completely fit in the outlet, reverse the plug. If it still does not fit, contact a qualified electrician. Do not attempt to modify the plug in any way.
- A short power supply cord is to be provided to reduce the risk resulting from becoming entangled in or tripping over a longer cord. An extension cord may be used if care is exercised in its use. If an extension cord is used, the marked electrical rating of the extension cord should be at least as great as the electrical rating of the appliance. If the appliance is of the grounded type, the extension cord should be a grounding 3-wire cord. The extension cord should be arranged so that it will not drape over the countertop or tabletop where it can be pulled on by children or tripped over unintentionally.

## GARANTIES IMPORTANTES : VEUILLEZ LIRE ET CONSERVER CE MANUEL D'UTILISATION ET ENTRETIEN

Lors de l'utilisation d'appareils électriques, il faut toujours respecter les précautions de sécurité de base, notamment :

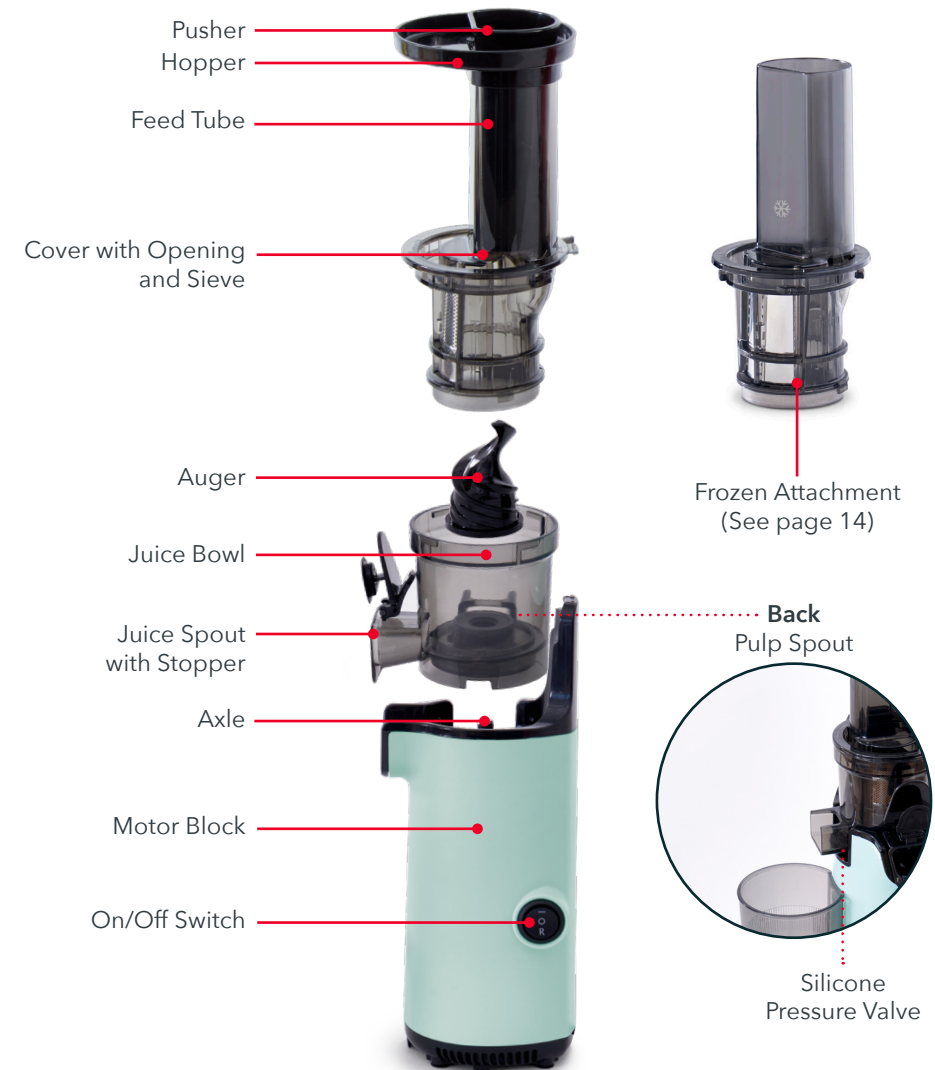
- Lisez toutes les instructions avant utilisation.
- Retirez tout sac ou emballage de l'appareil avant utilisation.
- Ne laissez jamais l'appareil sans surveillance pendant son utilisation.
- Assurez-vous que l'appareil est minutieusement nettoyé avant utilisation.
- N'utilisez pas l'appareil en dehors de son utilisation prévue. Pour usage ménager uniquement. Ne l'utilisez pas à l'extérieur.
- N'utilisez l'appareil que sur une surface stable et sèche.
- **ATTENTION :** Cet appareil ne peut pas être utilisé avec une minuterie externe ou un télécommande.
- Ne placez pas l'appareil sur ou à proximité d'un brûleur à gaz ou électrique, ou d'un four chaud.
- Cet appareil peut être utilisé par des personnes dont les capacités physiques, sensorielles ou mentales sont réduites ou qui manquent d'expérience et de connaissances, à condition qu'elles aient reçu une supervision ou des instructions concernant l'utilisation de l'appareil en toute sécurité et qu'elles comprennent les risques encourus.
- Cet appareil n'est pas un jouet. Ne laissez pas d'enfants utiliser cet appareil. Une étroite surveillance est nécessaire lorsqu'un appareil est utilisé par ou à proximité d'enfants.
- Afin d'éviter les risques de feux, d'électrocution, ou de dommages corporels, ne mettez pas le cordon, la prise ou l'appareil dans ou à proximité de l'eau ou d'autres liquides. L'extracteur de jus n'est PAS lavable en machine.
- Ne laissez pas le cordon toucher des surfaces chaudes ou pendre au niveau des bords de tables ou de comptoirs.
- Évitez d'utiliser des accessoires qui ne sont pas recommandés par le fabricant de l'appareil, car ils pourraient entraîner un feu, une électrocution ou un dommage corporel.
- Ne laissez jamais la machine fonctionner plus de 20 minutes à la fois.
- Débrancher l'appareil avant montage/démontage, déplacement, nettoyage ou entreposage. Pour débrancher, saisissez la fiche et retirez-la de la prise. Ne tirez jamais sur le cordon d'alimentation.
- N'utilisez pas cet appareil avec un cordon endommagé, une prise endommagée, ou si l'appareil est défectueux, s'il est tombé ou endommagé de quelque façon. Pour toute inspection, réparation ou ajustement, ramenez l'appareil au détaillant agréé le plus proche.
- Pour toute question liée à l'entretien autre que le nettoyage, veuillez contacter StoreBound directement au 1-800-898-6970 du lundi au vendredi, ou par courriel à support@bydash.com.
- StoreBound n'est nullement responsable des dommages causés par une mauvaise utilisation de l'appareil.
- Une mauvaise utilisation de l'appareil peut entraîner des dommages matériels ou même des blessures corporelles.

## GARANTIES IMPORTANTES

- Cet appareil a une fiche polarisée (un des brins est plus large que l'autre). Afin de réduire le risque d'électrocution, cette fiche ne s'insère dans la prise électrique que d'une façon. Si la fiche ne s'insère pas complètement dans la prise, inversez la fiche. Si elle ne s'insère toujours pas, contactez un électricien qualifié. N'essayez pas de modifier la fiche de quelque façon que ce soit.
- Un cordon d'alimentation court doit être fourni afin d'éviter le risque d'emmêlement ou de trébuchement lié aux cordons plus longs. Une rallonge peut être utilisée à condition de faire attention. Si une rallonge est utilisée, la puissance électrique indiquée sur la rallonge doit être au moins aussi grande que celle de l'appareil. Si l'appareil est connecté à la terre, la rallonge doit être un cordon tripolaire avec prise de terre. La rallonge doit être disposée de manière à ne pas reposer sur le comptoir ou sur la table où elle peut être tirée par un enfant ou source de trébuchement involontaire.

## GARANTIES IMPORTANTES : VEUILLEZ LIRE ET CONSERVER CE MANUEL D'UTILISATION ET ENTRETIEN

## PARTS & FEATURES







### BEFORE FIRST USE

- Remove all parts from the packaging. Note that the Hopper and Cleaning Brush are packed on the outside of the protective foam.
- Wash all removable and washable parts, such as the Pusher, Cover, Sieve, Auger, Bowl and Cups in warm, soapy water. Rinse and dry thoroughly.



- 1 Make sure the Cold Press Power Juicer is unplugged and the On/Off Switch is turned to Off prior to assembling (**photo A**).
- 2 Position the Juice Bowl on the Motor Block. Make sure the Bowl is mounted properly on the Axle of the Motor Block (**photo B**).



**3** Push the Auger firmly into the center of the Bowl, making sure that it rests on the bottom (**photo C**).



**4** Position the Cover on the Bowl and twist until the cover clicks shut. Make sure the arrow on the Cover aligns with the Lock icon on the lid (**photo D**). Note that the unit will not power on if the Cover is not locked into place.



**5** Position one cup under the Juice Spout and one cup under the Pulp Spout. The Juicer is now ready to use (**photo E**). The Hopper can be added to the tube of the Cover to hold more ingredients, if you wish (**photo F**).



## USING YOUR DELUXE COLD PRESS POWER JUICER



*veggie delight juice  
on page 23!*



- 1 The On/Off Switch has 3 positions: On (I), Off (O), and Reverse (R) (**photo A**).
- 2 Before using, make sure that the Juicer is turned Off and plug it in. Position the Cups underneath the Spouts (**photo B**). Clean fruit and vegetables you wish to juice. For best results, cut ingredients into 1-1.5" segments.



**CAUTION:** Remove hard pits or seeds prior to pressing to prevent possible damage to the Auger.

The peel and pits/seeds must be removed from oranges, lemons, grapefruit, and melons before use.





**3** Turn on the On/Off Switch (photo C).

**4** Insert the prepped ingredients into the opening at the top of the Cover. Push the food down into the bowl using the Pusher (photo D).

**TIP:** Begin with firmer ingredients, and then squeeze softer ingredients.



**CAUTION:** Never use the machine with an empty bowl, always add ingredients.

If the Cover becomes loosened from the Bowl during use, the motor of the machine will automatically stop to prevent hazards.

DO NOT insert fingers or other foreign objects into the opening of the Cover while the machine is in use.

Use only the Pusher and NOT spoons, forks, tongs, etc.



**5** If the machine becomes stuck during use, turn the On/Off Switch to R and hold down the switch so that the machine runs in the opposite direction (photo E). This could remove any obstructions. Release the switch to stop the reverse movement.

If this does not work, turn the machine off, remove the plug from the outlet and reassemble the machine according to the instructions. Then try to start the machine again.

**6** When the Cup is full or when all fruits and vegetables have been squeezed, turn the On/Off Switch off (photo F) and close the Juice Valve.

**NOTE:** If the machine overheats, it will turn off automatically. Turn the On/Off Switch to off and wait 10 minutes, then turn the machine on again. Juice should always be stored in the refrigerator.



**CAUTION:** Never let the machine work for longer than 30 minutes at a time.

Do not touch the On/Off Switch with wet hands.

## USING YOUR FROZEN ATTACHMENT



Frozen Attachment



Juice Attachment



Pulp Spout

Juice Spout

- Look for the ❄️ to determine which attachment is the Frozen Attachment for frozen treats.
- The Frozen Attachment is perfect for making frozen smoothies and sorbet.
- **NOTE:** When using the Frozen Attachment, the fruit will come out of the Pulp Spout rather than the Juice Spout.
- Do not put ice cubes in the Power Juicer.
- If freezing your own fruit for sorbet, cut fruit into 1" cubes before freezing for best results.
- Allow frozen fruit to soften at room temperature for about 5-15 minutes.
- Only juice one piece of fruit at a time when using the Frozen Attachment. For example, using the Pusher, juice 1 piece of fruit through the Feed Tube until it is entirely processed and then add another piece of fruit.
- Apply steady pressure when pushing food through the Feed Tube.







- 1 Turn the On/Off Switch to off. Close the Juice Valve and remove the Cups. Unplug the Juicer and allow it to cool completely before cleaning.
- 2 Remove the Cover by twisting counterclockwise (photo A) and then lifting. Remove Auger from Bowl (photo B) and clean underneath. If the Auger is stuck, try rotating and then removing.




- 3 Remove the Juice Bowl (photo C). Empty the Cups and clean the Cover, the Pusher, Sieve, Bowl, and Auger and Cups under running water.
- 4 Use the included Cleaning Brush to clean the Sieve properly (photo D). Be careful when cleaning the Sieve.

**CHEF TIP:** It is recommended to clean the Sieve with the Cleaning Brush for safety as the Sieve is sharp.



- 5 Use the chisel end of the Cleaning Brush to help remove fibrous material from the Pulp Spout (photo E).
- 6 If there is still residue in the mouth of the Spout, you can turn the Juicer Bowl over, open the Silicone Pressure Valve, and rinse with water (photo F). Then reattach the Silicone Pressure Valve.

**NOTE:** ALL parts of the Juicer are dishwasher safe, EXCEPT for the Motor Block.

-  DO NOT submerge the Motor Block in water.
- DO NOT use harsh metal sponges, as they could damage the machine.
- Dry all parts thoroughly after cleaning. Once completely dry, reassemble (See page 7) and store in a dry place.

- Starchy fruits and vegetables, such as sugarcane, avocado, banana, fig, mango, papaya, dragon fruit, kiwi and grapes, are not suitable for juicing as they will easily clog the Sieve.
- Fruits and vegetables should be cut into pieces 1-1.5" long before juicing, especially fibrous foods like celery and pineapple.
- Seeds and pits should be removed from fruits like citrus and melon before processing.
- Very seedy fruits like strawberries and raspberries might clog the Sieve. Be sure to go slowly and limit these types of fruits to small quantities to avoid clogging.







# RECIPE GUIDE



*Follow us!*

**@bydash** | recipes, videos, & inspiration

**@unprocessyourfood** | veg & vegan-friendly meals



## MAUI WOWIE

### *Ingredients:*

- 2 pineapple rounds
- 1 inch of ginger
- ¼ cup of sparkling water

### *Directions:*

1. Chop up the pineapple and remove the rind from the rounds.
2. Turn the Juicer on. Place pineapple rounds in the Ingredient Tube and use the Pusher to push the food through the tube.
3. Chop up the ginger and place it in the Ingredient Tube. Use the Pusher to push the ginger through the Juicer.
4. Now pour the sparkling water through the Juicer, the water will help to get the juice out of the Juicer. Serve and enjoy!



## VEGGIE DELIGHT

### *Ingredients:*

- 3 inch round of wheatgrass
- 2 large carrots
- ½ cup alfalfa sprouts
- 3 celery stalks
- 8 spinach leaves

### *Directions:*

1. Chop up the carrots and celery stalks into 1-1.5" pieces.
2. Turn the Juicer on. Place the ingredients in the Ingredient Tube one after another and use the Pusher to push them through. Serve and enjoy!





# SUNSHINE JUICE

## *Ingredients:*

- 1 orange
- ½ cup of raspberries
- 3 fresh mint leaves

## *Directions:*

1. Peel the orange and turn it into slices.
2. Turn the Juicer on. Place the orange pieces into the Ingredient Tube and use the Pusher to push the food through the tube.
3. Place the raspberries into the Ingredient Tube and use the Pusher to push the fruit through the Juicer.
4. Put the mint leaves into the Ingredient Tube and use the Pusher to push the food through. Serve and enjoy!







# MEAN GREEN

## *Ingredients:*

- 6 kale leaves
- 1 cucumber
- 4 celery stalks
- 2 green apples
- ½ inch lemon

## *Directions:*

1. Chop up the kale leaves.
2. Turn the Juicer on. Place the kale into the Ingredient Tube and use the Pusher to push the kale leaves through the Juicer.
3. Chop up the cucumber and place in the Ingredient Tube. Use the Pusher to push the cucumber through the Juicer.
4. Chop up the celery stalks into 1-1.5" pieces and place in the Ingredient Tube. Use the Pusher to push the celery through the Juicer.
5. Slice the apples and remove the seeds. Place the apple slices in the Ingredient Tube and push through with the Pusher.
6. Remove the peel and rind from the lemon. Place the lemon piece in the Ingredient Tube and use the Pusher to push the lemon through the Juicer. Serve and enjoy!



# WATERMELON PUNCH

## *Ingredients:*

- ¼ watermelon
- ½ lemon
- 2 oranges
- ¼ pineapple

## *Directions:*

1. Remove the rind from the watermelon and chop up into small pieces.
2. Turn the Juicer on. Place the watermelon pieces into the Ingredient Tube and use the Pusher to push through the Juicer.
3. Remove the peel and rind from the lemon. Chop the lemon into smaller pieces and put in the Ingredient Tube. Use the Pusher to push the lemon through the Juicer.
4. Peel the oranges and turn into slices. Place the orange slices into the Ingredient Tube and use the Pusher to push the orange through the Juicer.
5. Chop up and remove the peel from the pineapple. Put the pineapple pieces into the Ingredient Tube and use the Pusher to push the pineapple through the Juicer. Serve and enjoy!



# ALMOND MILK

## *Ingredients:*

- 1 cup almonds
- 1/3 cup water
- Honey, agave, cane sugar or maple sugar, to taste

## *Directions:*

1. Soak one cup of almonds in a large bowl of water approximately 8-12 hours. Rinse the almonds in a strainer.
2. Turn on the Juicer. Measure out 2/3 cup almonds and 1/3 cup water then pour into the Juicer.
3. Flavor the almond milk with honey, agave, nectar, cane sugar or maple sugar to taste.





**FEEL GOOD  
GUARANTEE™**

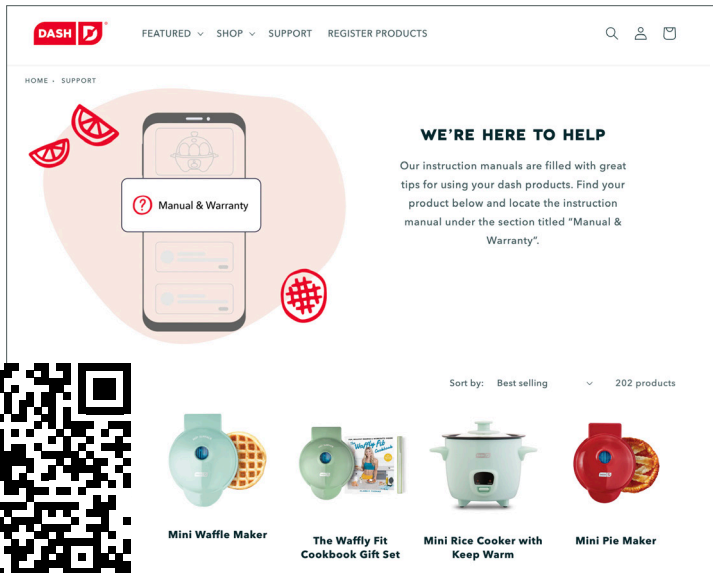
Dash values quality and workmanship and stands behind this product with our Feel Good Guarantee™. To learn more about our commitment to quality, visit [bydash.com/feelgood](http://bydash.com/feelgood).

We're here to help! Our customer support teams in the US and Canada are at your service Monday - Friday. Contact us at **1 (800) 898-6970** or [support@bydash.com](mailto:support@bydash.com).

scan here



[bydash.com/help](http://bydash.com/help)



**STOREBOUND, LLC - 1 YEAR LIMITED WARRANTY**

Your StoreBound product is warranted to be free from defects in material and workmanship for a period of one (1) year from the date of the original purchase when utilized for normal and intended household use. Should any defect covered by the terms of the limited warranty be discovered within one (1) year, StoreBound, LLC will repair or replace the defective part. To process a warranty claim, contact Customer Support at 1-800-898-6970 for further assistance and instruction. A Customer Support agent will assist you by troubleshooting minor problems. If troubleshooting fails to fix the problem, a return authorization will be issued. Proof of purchase indicating the date and place of purchase is required and should accompany the return. You must also include your full name, shipping address, and telephone number. We are unable to ship returns to a PO box. StoreBound will not be responsible for delays or unprocessed claims resulting from a purchaser's failure to provide any or all of the necessary information. Freight costs must be prepaid by the purchaser.

Send all inquiries to [support@bydash.com](mailto:support@bydash.com). There are no express warranties except as listed above.

REPAIR OR REPLACEMENT AS PROVIDED UNDER THIS WARRANTY IS THE EXCLUSIVE REMEDY OF THE CUSTOMER. STOREBOUND SHALL NOT BE LIABLE FOR ANY INCIDENTAL OR CONSEQUENTIAL DAMAGES OR FOR BREACH OF ANY EXPRESS OR IMPLIED WARRANTY ON THIS PRODUCT EXCEPT TO THE EXTENT REQUIRED BY APPLICABLE LAW. ANY IMPLIED WARRANTY OF MERCHANTABILITY OR FITNESS FOR A PARTICULAR PURPOSE ON THIS PRODUCT IS LIMITED IN DURATION TO THE DURATION OF THIS WARRANTY.

Some states do not allow the exclusion or limitation of incidental or consequential damages, or limitations on how long an implied warranty lasts. Therefore, the above exclusions or limitations may not apply to you. This warranty gives you specific legal rights and you may also have other rights, which vary from state to state.

Refurbished items or items not purchased through an authorized retailer are not eligible for warranty claims.

**REPAIRS**

DANGER! Risk of electric shock! The Dash Deluxe Cold Press Power Juicer is an electrical appliance. Do not attempt to repair the appliance yourself under any circumstances. Contact Customer Support regarding repairs to the appliance.

**TECHNICAL SPECIFICATIONS**

Voltage 120V~60Hz  
Power Rating 130W  
Stock#: DCSJ255\_20230425\_V9





1-800-898-6970 | @bydash | bydash.com