



*recipes
inside!*

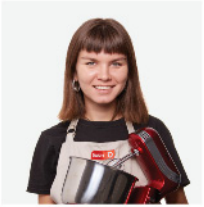
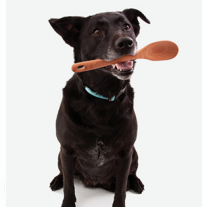


#DDTMH200

HALLOWEEN MINI DOG TREAT MAKER

Instruction Manual | Recipe Guide





HALLOWEEN MINI DOG TREAT MAKER

- Important Safeguards.....4-7
- Parts & Features..... 8
- Using Your Halloween Mini Dog Treat Maker..... 9-12
- Cleaning & Maintenance 13
- Troubleshooting..... 14-15
- Recipes..... 17-27
- Notes...28-29
- Customer Support30
- Warranty.....31

the dash team!

IMPORTANT SAFEGUARDS: PLEASE READ AND SAVE THIS INSTRUCTION AND CARE MANUAL.

When using electrical appliances, basic safety precautions should be followed, including:

- Read all instructions.
- Remove all bags and packaging from appliance before use.
- Never leave appliance unattended when in use.
- Make sure the appliance is cleaned thoroughly before using.
- Do not use appliance for other than its intended use. For household use only. Do not use outdoors.
- DO NOT lift the Cover so that your arm is over the Cooking Surface as it is hot and may cause injury. Lift from the side.
- To prevent the risk of fire, electric shock, or personal injury, do not put cord, plug, or appliance in or near water or other liquids. The Halloween Mini Dog Treat Maker is NOT dishwasher safe.
- Never use abrasive cleaning agents to clean your appliance as this may damage the Halloween Mini Dog Treat Maker and its nonstick Cooking Surface.
- Do not operate this appliance with a damaged cord, damaged plug, after the appliance malfunctions, is dropped, or damaged in any manner. Return appliance to the nearest authorized service facility for examination, repair or adjustment.
- DO NOT use the Halloween Mini Dog Treat Maker near water or other liquids, with wet hands, or while standing on a wet surface.
- For maintenance other than cleaning, please contact StoreBound directly at 1-800-898-6970 from 9AM - 9PM EST Monday - Friday or by email at support@bydash.com.
- Do not use metal utensils on the Cooking Surface as this will damage the nonstick surface.
- This appliance is not intended for use by persons (including children) with reduced physical, sensory, or mental capabilities, or lack of experience and knowledge unless they are provided with supervision and instruction concerning use of the appliance by a person responsible for their safety.
- Do not place appliance on or near a

hot gas burner, hot electric burner, or in a heated oven.

- Be cautious when moving an appliance containing hot oils or other hot liquids.
- Refrain from using attachments that are not recommended by the appliance manufacturer, as this may result in fire, electric shock, or personal injury.
- Allow Halloween Mini Dog Treat Maker to cool completely before moving, cleaning, or storing.
- Close supervision is necessary when any appliance is used by or near children.
- Do not let the cord touch hot surfaces or hang over the edge of table or counter.
- Always be sure to unplug the appliance from outlet prior to moving, cleaning, storage, and when not in use.
- StoreBound shall not accept liability for damages caused by improper use of the appliance.
- Improper use of the Halloween Mini Dog Treat Maker can result in property damage or even in

personal injury.

- This appliance has a polarized plug (one blade is wider than the other). To reduce the risk of electric shock, this plug will fit in a polarized outlet only one way. If the plug does not completely fit in the outlet, reverse the plug. If it still does not fit, contact a qualified electrician. Do not attempt to modify the plug in any way.
- A short power supply cord is to be provided to reduce the risk resulting from becoming entangled in or tripping over a longer cord. An extension cord may be used if care is exercised in its use. If an extension cord is used, the marked electrical rating of the extension cord should be at least as great as the electrical rating of the appliance. If the appliance is of the grounded type, the extension cord should be a grounding 3-wire cord. The extension cord should be arranged so that it will not drape over the counter top or tabletop where it can be pulled on by children or tripped over unintentionally.

IMPORTANT SAFEGUARDS: PLEASE READ AND SAVE THIS INSTRUCTION AND CARE MANUAL.

GARANTIES IMPORTANTES: VEUILLEZ LIRE ATTENTIVEMENT CE MANUEL AVANT D'UTILISER L'APPAREIL.

Lors de l'utilisation d'appareils électriques, des précautions élémentaires de sécurité doivent être respectées, notamment:

- Lisez toutes les instructions.
- Retirez tout sac ou emballage de l'appareil avant utilisation.
- Ne laissez jamais l'appareil sans surveillance pendant son utilisation.
- Assurez-vous que l'appareil est minutieusement nettoyé avant utilisation.
- N'utilisez pas l'appareil en dehors de son utilisation prévue. Pour usage ménager uniquement. Ne l'utilisez pas à l'extérieur.
- **AVERTISSEMENT:** Surfaces chaudes ! Ne touchez jamais la surface de cuisson ou le couvercle pendant l'utilisation de l'appareil. Soulevez et baissez toujours le couvercle à l'aide de sa poignée.
- NE soulevez PAS le couvercle pour que votre bras se trouve au-dessus de la surface de cuisson brûlante, car cela pourrait entraîner des blessures. Soulevez par le côté.
- Afin d'éviter les risques de feux, d'électrocution, ou de dommages corporels, ne mettez pas le cordon, la prise ou l'appareil dans ou à proximité de l'eau ou d'autres liquides. Le mini gaufrier n'est PAS lavable en machine.
- N'utilisez jamais des produits d'entretien abrasifs pour nettoyer l'appareil, car cela pourrait endommager le mini gaufrier et sa surface de cuisson anti-adhérente.
- N'utilisez pas cet appareil avec un cordon ou une prise endommagé(e), ou si l'appareil est défilant, s'il est tombé ou endommagé de quelque façon. Pour toute inspection, réparation ou ajustement, ramenez l'appareil au détaillant agréé le plus proche.
- N'utilisez PAS le mini gaufrier à proximité de l'eau ou d'autres liquides, avec des mains mouillées, ou si vous vous tenez sur une surface mouillée.
- Pour toute question liée à l'entretien autre que le nettoyage, veuillez contacter StoreBound directement au 1-800-898-6970 de 9 à 21 heures, du lundi au vendredi, ou par courriel à support@bydash.com.
- N'utilisez pas d'ustensiles en métal sur la surface de cuisson car cela endommagerait la surface anti-adhérente.
- Cet appareil n'est pas prévu pour être utilisé par des personnes (enfants compris) ayant des capacités

physiques, sensorielles ou mentales réduites, ou manquant d'expérience et de connaissances, à moins qu'elles ne soient supervisées et instruites sur l'utilisation de cet appareil par une personne responsable de leur sécurité.

- Ne placez pas l'appareil sur ou à proximité d'un brûleur à gaz ou électrique, ou d'un four chaud.
- Faites attention lorsque vous déplacez un appareil contenant des huiles chaudes ou d'autres liquides chauds.
- Évitez d'utiliser des accessoires qui ne sont pas recommandés par le fabricant de l'appareil, car ils pourraient entraîner un feu, une électrocution ou un dommage corporel.
- Laissez le mini gaufrier refroidir complètement avant tout déplacement, nettoyage ou entreposage.
- Une attention particulière doit être apportée quand l'appareil est utilisé par ou à proximité d'enfants.
- Ne laissez pas le cordon toucher des surfaces chaudes ou pendre au niveau des bords de tables ou de comptoirs. l'appareil de la prise électrique avant tout déplacement, nettoyage ou entreposage.
- StoreBound n'est nullement responsable des dommages causés par une

mauvaise utilisation de l'appareil. Ces brins est plus large que l'autre). Afin de réduire le risque d'électrocution, cette fiche ne s'insère dans la prise électrique que d'une façon. Si la fiche ne s'insère pas complètement dans la prise, inversez la fiche. Si elle ne s'insère toujours pas, contactez un électricien qualifié. N'essayez pas de modifier la fiche de quelque façon que ce soit.

- Un cordon d'alimentation court doit être fourni afin d'éviter le risque d'emmêlement ou de trébuchement lié aux cordons plus longs. Une rallonge peut être utilisée à condition de faire attention. Si une rallonge est utilisée, la puissance électrique indiquée sur la rallonge doit être au moins aussi grande que celle de l'appareil. Si l'appareil est connecté à la terre, la rallonge doit être un cordon tripolaire avec prise de terre. La rallonge doit être disposée de manière à ne pas reposer sur le comptoir ou sur la table où elle peut être tirée par un enfant ou source de trébuchement involontaire.

GARANTIES IMPORTANTES: VEUILLEZ LIRE ATTENTIVEMENT CE MANUEL AVANT D'UTILISER L'APPAREIL.

PARTS & FEATURES



USING YOUR HALLOWEEN MINI DOG TREAT MAKER

Before first use, remove all packaging material and thoroughly clean your Halloween Mini Dog Treat Maker.



Never touch the Cooking Surface or Cover while appliance is in use.



DO NOT lift the Cover so that your arm is over the Cooking Surface as it is hot and may cause injury.



Always lift and lower the Cover by the Cover Handle. Lift from the side.

USING YOUR HALLOWEEN MINI DOG TREAT MAKER



- 1 Place the appliance on a stable and dry surface. Plug the cord into a power outlet. The Indicator Light (photo A) will illuminate, signaling that the Halloween Mini Dog Treat Maker is heating up.
- 2 Once the Cooking Surface reaches the optimal cooking temperature, the Indicator Light will automatically shut off. Carefully lift the Cover by the Cover Handle (photo B). Now, you're ready to get cooking!

USING YOUR HALLOWEEN MINI DOG TREAT MAKER



- 3 If you like, spray both Cooking Surfaces with a small amount of cooking spray (photo C). This will help the treats release more easily.
- 4 Place or pour about 1/2 tsp of dough onto each mold in the Cooking Surface (photo D) and close the Cover. For best results, flatten dough into 2x2" squares that fit each mold.

Chef Tip!



Aerosol cooking sprays often contain additives that can cause nonstick surfaces to become sticky and hard to clean over time. To ensure the longevity of your product, use a spray bottle and a neutral oil (vegetable, canola, etc.) to lubricate cooking surfaces.





- 5** Once the dog treats are cooked (see cooking times in our Recipe Guide on page 27), carefully remove them from the Cooking Surface with a heat-resistant nylon, wood, or silicone cooking utensil (photo E).

NOTE: Do not use metal utensils to remove or place food on the Cooking Surface as this will damage the nonstick surface.

- 6** When you have finished cooking, unplug your Halloween Mini Dog Treat Maker and allow it to cool before moving or cleaning.

Allow your treats to cool completely and harden before storing. Once cool, serve!

Always allow the appliance to cool completely before moving, cleaning, or storing. Do not submerge appliance in water or any other liquids. Never use abrasive cleaning agents to clean your appliance as this may damage the Halloween Mini Dog Treat Maker.

In order to keep your Halloween Mini Dog Treat Maker in pristine working order, thoroughly clean the appliance after each use. This will prevent the build-up of food or oil.

EVERYDAY CLEANING

- Unplug your Halloween Mini Dog Treat Maker and allow it to cool completely.
- Using a damp, soapy cloth, wipe down the Cooking Surface and Cover. Thoroughly rinse the cloth and wipe again.
- Thoroughly dry Mini Dog Treat Maker before storing.

FOR TOUGH STAINS

- If there is food burned onto the Cooking Surface, pour on a little cooking oil and let sit for 5 to 10 minutes.
- Scrub the Cooking Surface with a sponge or soft bristled brush to dislodge food.
- Use a damp, soapy cloth to wipe down the Cooking Surface. Thoroughly rinse the cloth and wipe again.
- If any food remains, pour on cooking oil and let sit for a few hours, then scrub and wipe clean.

Never use abrasive cleaning agents to clean your appliance as this may damage the Mini Dog Treat Maker and its nonstick Cooking Surface.

While Dash products are durable, you may encounter one or more of the problems listed below. If the issue is either not solved by the solutions recommended below or not included on this page, please contact our Customer Support Team at 1-800-898-6970 or support@bydash.com.

- 1. The light on the Mini Dog Treat Maker keeps shutting off.**
 - This is normal. During the cooking process, the heating element will automatically turn on and off to regulate the temperature and ensure that the Cooking Surface does not get too hot or cold. When this occurs, the Indicator Light turns on and off.
- 2. How do I know when the Mini Dog Treat Maker is heated and ready to use?**
 - When the Mini Dog Treat Maker reaches the optimal temperature, the Indicator Light shuts off and that means you're ready to get cooking!
- 3. There is no On/Off Button. How do I turn the Mini Dog Treat Maker off and on?**
 - To turn on, simply plug in the power cord. When you're done cooking, turn off the Mini Dog Treat Maker by unplugging it.
- 4. When using my Mini Dog Treat Maker, the Cover gets very hot. Is this normal?**
 - Yes, this is completely normal. When using your Mini Dog Treat Maker, always lift and lower the Cover by the Cover Handle. To prevent personal injury, DO NOT lift the Cover so that your arm is over the Cooking Surface as it is hot and may cause injury. Lift from the side.

- 5. After using my Mini Dog Treat Maker a few times, food is starting to stick to the surface. What is happening?**
 - There is probably a build-up of burnt food residue on the Cooking Surface. This is normal, especially when cooking with sugar. Allow the appliance to cool fully, pour on a little cooking oil and let sit for 5-10 minutes. Scrub Surface with a sponge or soft bristled brush to dislodge food. Use a damp, soapy cloth to wipe down the Cooking Surface. Rinse the cloth and wipe again. If food remains, pour on cooking oil and let sit for a few hours, then scrub and wipe clean.
- 6. The Indicator Light will not turn on and the Cooking Surface is failing to heat.**
 - Ensure that the power cord is plugged into the power outlet.
 - Check to make sure the power outlet is operating correctly.
 - Determine if a power failure has occurred in your home, apartment or building.





Recipes in the Recipe Guide that follows have been reviewed and approved by a licensed veterinarian as safe for consumption by dogs.

The health of your pet is 100% in your hands, and we expect you to use your knowledge of your pet and the input of your trusted veterinarian, to judge whether any information provided in these materials is appropriate for your pet.

Please be informed, at Dash we love dogs but we are not vets—StoreBound LLC will not be held responsible for any pet allergies or other adverse reactions your pet may experience based on the information in the materials accompanying this product.

RECIPE GUIDE



Follow us!

@**bydash** | recipes, videos, & inspiration

@**unprocessyourfood** | veg & vegan-friendly meals



CHICKEN & WILD RICE TREATS

Ingredients: (Yields: 10-12 dog treats)

½ cup finely chopped cooked chicken breast
1 large egg
2 tbsp brown rice flour
½ cup thoroughly cooked wild rice
¼ cup flat-leaf parsley leaves, coarsely chopped

Directions:

1. Preheat the Halloween Mini Dog Treat Maker.
2. In a mini food processor, combine the chicken and rice. Whirl until they form a grainy paste. Add the parsley. Pulse until the mixture is a fine paste. Add the egg, and pulse to make a wet purée.
3. Add the rice flour. With a fork, mix until a soft, slightly sticky dough forms, adding a bit more flour if needed.
4. Lightly coat the Cooking Surface of the Halloween Mini Dog Treat Maker with cooking spray. Add dough to the Halloween Mini Dog Treat Maker and close the Lid.
5. Bake treats for 7 minutes.
6. Remove with tongs and place on a rack to cool. Repeat with the remaining dough.



PUMPKIN, CARROT & SPINACH TREATS

Ingredients: (Yields: 26-28 dog treats)

¼ cup finely shredded carrots
1 large egg, beaten
½ cup pumpkin purée
½ cup quick cooking oats
2 tbsp unsweetened smooth natural peanut butter
1 cup whole wheat flour
¼ cup finely chopped baby spinach

Directions:

1. Preheat the Mini Dog Treat Maker.
2. Spread the carrots on a paper towel. Cover with another paper towel and roll the carrots in the towels, pressing firmly to extract as much moisture as possible. Set the carrots aside.
3. In a mixing bowl, combine the pumpkin, peanut butter, and egg. Whisk until they are combined and smooth. Add the carrots, spinach, oats, flour and mix until a soft, slightly sticky dough forms.
4. Lightly coat the Cooking Surface of the Mini Dog Treat Maker with cooking spray. Add dough to the Mini Dog Treat Maker and close the Lid.
5. Bake the treats for 6 minutes.
6. Remove treats and place on a wire rack to cool. Repeat with the remaining dough.



CARROT & APPLE TREATS



Ingredients: (Yields: 20-24 dog treats)

¼ cup finely shredded carrots

¼ cup unsweetened apple sauce

1 large egg, beaten

½ cup quick-cooking oats

¾ cup whole wheat flour

Directions:

1. Preheat the Dog Treat Maker.
2. In a mixing bowl, combine the carrots, apple sauce, and egg. Whisk until they are combined. Mix in the oats. Add the flour and mix until a soft, slightly sticky dough forms.
3. Spray the inside of the Dog Treat Maker lightly with cooking spray. Place a log of dough into a cavity of the Dog Treat Maker. Fold in the ends and press them to fill the knobs on each end of the cavity. Repeat, filling all 6 cavities of the Dog Treat Maker. Close the lid, pressing until it clicks shut.

4. Bake the treats for 6 minutes. Using short tongs, turn the treats. Close the lid, pressing down firmly; it is ok if it does not click shut. Bake the treats for 6 minutes, or until dark brown and firm when pressed. Transfer treats to a wire rack and cool completely.
5. Repeat to bake the remaining treats. Using spray again is not needed.



Bake your treats for another couple minutes for an extra crunch!



CRANBERRY ALMOND TREATS

Ingredients: (Yields: 12-14 dog treats)

1/2 cup almond meal	1 tbsp coconut oil, melted
2 tbsp coconut flour	1 large egg, beaten
1/2 tsp ground cinnamon, optional	3 tbsp dried cranberries finely chopped
3 tbsp unsweetened smooth almond butter	

Directions:

1. Preheat the Mini Dog Maker.
2. In a mixing bowl, combine the almond meal, coconut flour, and cinnamon, if using. In a second bowl, combine the almond butter, coconut oil, egg, and whisk until they are combined and smooth. Add the wet ingredients to the dry. Add the cranberries. Mix vigorously for 1 minute, until a soft dough forms.
3. Lightly coat the Cooking Surface of the Halloween Mini Dog Treat Maker with cooking spray. Add dough to the Halloween Mini Dog Treat Maker and close the Lid.
4. Bake for 5 minutes.
5. Transfer treats to a wire rack to cool. Repeat with remaining dough.



GRAIN-FREE DENTAL TREATS

Ingredients: (Yields: 23-25 dog treats)

1/4 cup fresh mint leaves	1 large egg	1/2 tsp ghee, melted
1/4 cup flat-leaf parsley leaves	1 1/2 tsp activated charcoal powder	1/4 cup bone broth or warm water
1 tbsp brewers yeast	1 1/2 tbsp coconut oil, melted	2 cups garbanzo bean flour
1/4 teaspoon gelatin		

Directions:

1. Preheat the Mini Dog Maker.
2. In a food processor, combine the mint and parsley, and pulse until coarsely chopped. Add the yeast, gelatin, and egg. Add the charcoal powder very gently as this fine powder flies easily. Pulse until the mixture is well combined. Add the coconut oil, ghee, broth, and pulse to combine. Add the garbanzo bean flour, and pulse until the mixture forms a soft, slightly crumbly dough.
3. Lightly coat the Cooking Surface of the Mini Dog Treat Maker with cooking spray. Add dough to the Mini Dog Treat Maker and close the Lid.
4. Bake for 6 minutes.
5. Transfer treats to a wire rack to cool. Repeat with remaining dough.



PEANUT BUTTER PUMPKIN TREATS

Ingredients: (Yields: 27-29 dog treats)

½ cup pumpkin purée

3 tbsp unsweetened, smooth natural peanut butter

1 large egg, beaten

1 cup whole wheat flour

Directions:

1. Heat the Mini Dog Maker.
2. In a mixing bowl, combine the pumpkin purée, peanut butter, egg, and whisk until the mixture is combined and smooth. Add the flour. Mix with a fork until a soft dough forms, using your hands at the end to work in the last bits if necessary.
3. Lightly coat the Cooking Surface of the Mini Dog Treat Maker with cooking spray. Add dough to the Mini Dog Treat Maker and close the Lid.
4. Bake for 5 minutes.
5. Remove treats and cool on a wire rack. Repeat with remaining dough.





BANANA FLAX TREATS

Ingredients: (Yields: 24-26 dog treats)

- ½ cup quick-cooking oats
- ½ cup whole wheat flour
- 1 tsp ground cinnamon
- 1 medium banana, mashed
- 1 tbsp ground flax seed meal
- 3 tbsp coconut oil, melted

Directions:

1. Preheat the Mini Dog Maker.
2. In a mixing bowl, mix together the oats, flour, flax meal, and cinnamon to combine them. Add the banana, coconut oil, and with a fork mix to form a soft, slightly sticky dough.
3. Lightly coat the Cooking Surface of the Mini Dog Treat Maker with cooking spray. Add dough to the Mini Dog Treat Maker and close the Lid.
4. Bake for 5 minutes.
5. Transfer treats to a wire rack to cool. Repeat the process with remaining dough.

QUICKIE DOG TREATS

For super easy homemade treats, pick your pup's favorite flavor. Mix with nutritious grain, bake and enjoy! Recipes yield 16-30 treats.

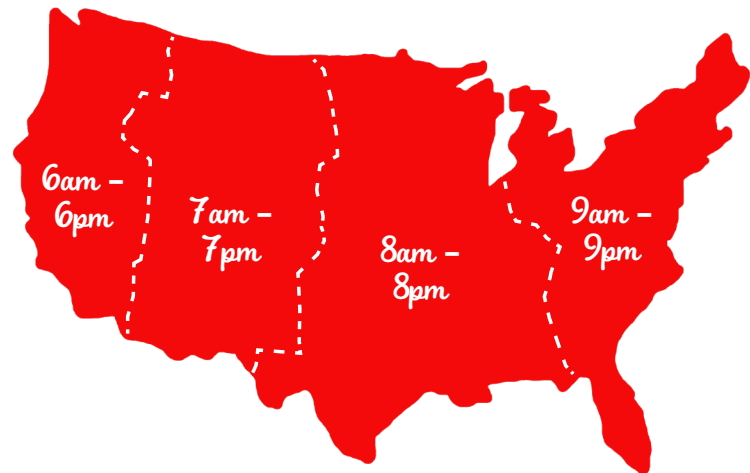
MY DOG LOVES	GRAIN	HOW TO COMBINE	BAKE FOR
Carrots, Sweet Corn and Pumpkin blended, ½ cup	whole wheat flour 1 cup	Blend the vegetables in a blender until smooth. Mix with flour in a bowl.	(Turning halfway) 5 minutes
Cooked Chicken ½ cup finely chopped	old-fashioned oats ¾ cup	Whirl oats in food processor. Add chicken. Then add ¼ cup broth or water.	6 minutes
Apple and Sweet Potato blended, ½ cup	toasted wheat germ 1 cup + 2 tbsp	Blend apple and sweet potato in a blender until smooth. Mix in a bowl for 1-2 minutes.	6 minutes
Sweet Potato blended, ½ cup	quick cooking oats 1 cup	Mash sweet potato and mix in a bowl.	6 minutes
Peanut Butter Natural, Unsweetened ½ cup	whole wheat flour ½ cup	Mix in a bowl. Then add 3 tbsp warm water. Knead for 30 seconds.	5 minutes

Finished treats can be stored anywhere, recommended keep time is 3-4 days for freshness.

**FEEL GOOD
GUARANTEE™**

Dash values quality and workmanship and stands behind this product with our Feel Good Guarantee™. To learn more about our commitment to quality, visit bydash.com/feelgood.

Our customer support teams in the US and Canada are at your service Monday - Friday during the times below. Contact us at **1 (800) 898-6970** or support@bydash.com



Hey **Hawaii!** You can reach our customer service team from **3AM to 3PM**. And also, **Alaska**, feel free to reach out from **5AM to 5PM**.

STOREBOUND, LLC - 1 YEAR LIMITED WARRANTY

Your StoreBound product is warranted to be free from defects in material and workmanship for a period of one (1) year from the date of the original purchase when utilized for normal and intended household use. Should any defect covered by the terms of the limited warranty be discovered within one (1) year, StoreBound, LLC will repair or replace the defective part. To process a warranty claim, contact Customer Support at 1-800-898-6970 for further assistance and instruction. A Customer Support agent will assist you by troubleshooting minor problems. If troubleshooting fails to fix the problem, a return authorization will be issued. Proof of purchase indicating the date and place of purchase is required and should accompany the return. You must also include your full name, shipping address, and telephone number. We are unable to ship returns to a PO box. StoreBound will not be responsible for delays or unprocessed claims resulting from a purchaser's failure to provide any or all of the necessary information. Freight costs must be prepaid by the purchaser.

Send all inquiries to support@bydash.com. There are no express warranties except as listed above.

REPAIR OR REPLACEMENT AS PROVIDED UNDER THIS WARRANTY IS THE EXCLUSIVE REMEDY OF THE CUSTOMER. STOREBOUND SHALL NOT BE LIABLE FOR ANY INCIDENTAL OR CONSEQUENTIAL DAMAGES OR FOR BREACH OF ANY EXPRESS OR IMPLIED WARRANTY ON THIS PRODUCT EXCEPT TO THE EXTENT REQUIRED BY APPLICABLE LAW. ANY IMPLIED WARRANTY OF MERCHANTABILITY OR FITNESS FOR A PARTICULAR PURPOSE ON THIS PRODUCT IS LIMITED IN DURATION TO THE DURATION OF THIS WARRANTY.

Some states do not allow the exclusion or limitation of incidental or consequential damages, or limitations on how long an implied warranty lasts. Therefore, the above exclusions or limitations may not apply to you. This warranty gives you specific legal rights and you may also have other rights, which vary from state to state.

Refurbished items or items not purchased through an authorized retailer are not eligible for warranty claims.

REPAIRS

DANGER! Risk of electric shock! The Dash Halloween Mini Dog Treat Maker is an electrical appliance.

Do not attempt to repair the appliance yourself under any circumstances. Contact Customer Support regarding repairs to the appliance.

TECHNICAL SPECIFICATIONS

Voltage: 120V ~ 60Hz
 Power Rating: 420W
 Stock#: DDTMH200_20220408_V3
 Made in China



1-800-898-6970 | @bydash | bydash.com