



*recipes
inside!*

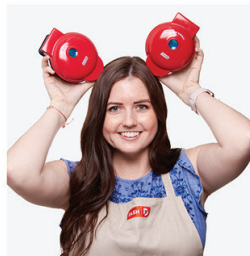


#DEZK003

EASY KETTLE

Instruction Manual | Recipe Guide







EASY KETTLE

Important Safeguards.....	4-7
Parts & Features.....	8
Safety Features	9
Setting Up Your Easy Kettle	10
Using Your Easy Kettle.....	11
Cleaning & Maintenance	12
Hot Ideas.....	14-15
Notes.....	16-17
Customer Support	18
Warranty.....	19

the dash team!

IMPORTANT SAFEGUARDS

IMPORTANT SAFEGUARDS: PLEASE READ AND SAVE THIS INSTRUCTION AND CARE MANUAL.

When using electrical appliances, basic safety precautions should be followed, including:

- Read all instructions
- Close supervision is necessary when any appliance is used by or near children.
- Remove all bags and packaging from appliance before use.
- Wash and dry Easy Kettle before using for the first time.
- Make sure that the bottom of the Kettle, Power Base, and cord are completely dry before each use.
- Prior to first-time use, boil water in the Easy Kettle and then pour it out. This will eliminate any odors.
- For maintenance other than cleaning, please contact StoreBound directly at 1-800-898-6970 from 7AM – 7PM PST Monday – Friday or by email at support@bydash.com.
- To prevent the risk of fire, electric shock, or personal injury, do not place the cord, plug, or unit near water or other liquids.
- Do not operate any appliance with a damaged cord or plug or after the appliance malfunctions or has been damaged in any manner. Return appliance to the nearest authorized service facility for examination, repair or adjustment.
- Do not touch hot surfaces. Use handles or knobs.
- Do not operate Kettle with less than 0.5L of water inside.
- **WARNING:** To avoid electric shock, do not overfill Kettle. Water level should never go above the Max 1.7L marker.
- Never immerse the Power Base or Kettle in water or any other liquid; instead, wipe the surface with a soft, damp cloth and properly clean inside of Kettle (see Maintenance instructions on page 12).
- Never leave appliance unattended when in use.
- This appliance is not intended for use by persons (including children) with reduced physical, sensory or mental capabilities, or lack of experience and knowledge unless they are provided with supervision and instruction concerning use of the appliance by a person responsible for their safety.
- Children should be supervised to ensure that they do not play with the appliance.
- Use extreme caution when opening the Lid as escaping hot steam may cause personal injury.
- To prevent personal injury, do not touch the surface of the Easy Kettle during or following use. Allow appliance to cool.
- Unplug from outlet when not in use and before cleaning. Allow to cool before putting on or taking off parts, and before cleaning the appliance.
- To disconnect, turn any control to “off”, then remove plug from wall outlet.
- Do not operate any appliance with a damaged cord or plug.
- Do not use the appliance if any of the parts are damaged.

- Do not use appliance for other than intended use.
- Scalding may occur if the Lid is removed during the brewing cycles.
- Refrain from using attachments that are not recommended by the appliance manufacturer, as this may result in fire, electric shock, or personal injury.
- Do not use appliance outdoors or for commercial purposes.
- When disposing of the Easy Kettle, do not discard with general household waste; instead, drop off at a designated electronic waste recycling facility.
- Do not let the cord touch hot surfaces or hang over the edge of tables or counters.
- A short power supply cord is to be provided to reduce the risk resulting from becoming entangled in or tripping over a longer cord. An extension cord is available and may be used if care is exercised in their use. If an extension cord is used, the marked electrical rating of the extension cord should be at least as great as the electrical rating of the appliance. The extension cord should be arranged so that it will not drape over the countertop or tabletop where it can be pulled on by children or tripped over unintentionally.
- If an extension cord must be used, make sure the electrical rating of the wire is compatible with the Easy Kettle.
- Do not place appliance on or near a hot gas burner, hot electric burner, or in a heated oven.
- StoreBound shall not accept liability for damages caused by improper use of the appliance.
- Improper use of the Easy Kettle can result in property damage or even in personal injury.
- This appliance has a polarized plug (one blade is wider than the other). To reduce the risk of electric shock, this plug will fit in a polarized outlet only one way. If the plug does not completely fit in the outlet, reverse the plug. If it still does not fit, contact a qualified electrician. Do not modify the plug in any way.

IMPORTANT SAFEGUARDS: PLEASE READ AND SAVE THIS INSTRUCTION AND CARE MANUAL.

CONSIGNES DE SÉCURITÉ IMPORTANTES

CONSIGNES DE SÉCURITÉ IMPORTANTES : VEUILLEZ LIRE ET CONSERVER CE MANUEL D'INSTRUCTION ET D'ENTRETIEN.

L'utilisation d'appareils électriques nécessite de prendre des mesures de sécurité de base, y compris :

- Lisez toutes les instructions.
- Une étroite surveillance est nécessaire lorsqu'un appareil est utilisé par ou à proximité d'enfants.
- Retirez tous les sacs et emballages de l'appareil avant de l'utiliser.
- Nettoyez et séchez la bouilloire Easy Kettle avant de l'utiliser pour la première fois.
- Assurez-vous que le fond de la Bouilloire, la Base d'alimentation et le cordon sont complètement secs avant chaque utilisation.
- Avant la première utilisation, faites bouillir de l'eau dans la bouilloire Easy Kettle, puis videz-la. Cela éliminera toutes les odeurs.
- Pour tous travaux d'entretien autre que le nettoyage, veuillez contacter StoreBound directement au 1-800-898-6970, de 7 h à 19 h HNP, du lundi au vendredi, ou par courriel à l'adresse support@storebound.com.
- Pour éviter tout risque d'incendie, de décharge électrique ou de blessure, ne mettez pas le cordon, la fiche ou l'appareil dans de l'eau ou d'autres liquides ou à proximité de ces derniers.
- N'utilisez pas un appareil dont le cordon ou la fiche sont endommagés ou après un dysfonctionnement ou suite à tout autre dommage quelconque. Retournez l'appareil à l'établissement de service agréé le plus proche pour l'examen, la réparation ou le réglage.
- Ne touchez pas les surfaces chaudes. Utilisez des poignées ou des boutons.
- Ne faites pas fonctionner la Bouilloire si elle contient moins de 0,5 L d'eau.
- **AVERTISSEMENT** : Pour éviter tout choc électrique, ne remplissez pas trop la bouilloire. Le niveau d'eau ne doit jamais dépasser le repère Max 1,7 L.
- N'immergez jamais la Base d'alimentation ou la Bouilloire dans l'eau ou tout autre liquide ; essuyez plutôt la surface avec un chiffon doux et humide et nettoyez correctement l'intérieur de la Bouilloire (voir les instructions d'entretien à la page 12).
- Ne laissez jamais l'appareil sans surveillance lorsqu'il est en marche.
- Cet appareil n'est pas conçu pour être utilisé par des personnes (y compris les enfants) dont les capacités physiques, sensorielles ou mentales sont réduites, ou des personnes inexpérimentées ou disposant de connaissances insuffisantes, excepté sous la surveillance d'une personne responsable de leur sécurité qui leur donne des instructions concernant l'utilisation de l'appareil.
- Les enfants doivent être surveillés pour veiller à ce qu'ils ne jouent pas avec l'appareil.
- Soyez très prudent lorsque vous ouvrez le Couvercle, car la vapeur chaude qui s'échappe peut provoquer des blessures.
- Pour éviter toute blessure, ne touchez pas la surface de la Bouilloire pendant ou après son utilisation. Laissez refroidir l'appareil.

- Débranchez la prise lorsqu'elle n'est pas utilisée et avant de la nettoyer. Laissez refroidir avant de mettre ou d'enlever des pièces et avant de nettoyer l'appareil.
- Pour le débrancher, mettez l'appareil sur « Off » (Arrêt), puis débranchez la fiche de la prise murale.
- N'utilisez pas un appareil dont le cordon ou la fiche sont endommagés.
- N'utilisez pas l'appareil si l'une de ses pièces est endommagée.
- N'utilisez pas l'appareil à des fins autres que celles prévues.
- Une brûlure peut se produire si le Couvercle est retiré pendant les cycles de réchauffement.
- Utilisez uniquement des accessoires recommandés par le fabricant de l'appareil pour éviter tout risque d'incendie, de choc électrique ou de blessures.
- N'utilisez pas l'appareil à l'extérieur ou à des fins commerciales.
- Lors de la mise au rebut de la bouilloire Easy Kettle ne le jetez pas avec les déchets ménagers généraux ; déposez-le plutôt dans un centre de recyclage des déchets électroniques désigné.
- Ne laissez pas le cordon toucher des surfaces chaudes ou pendre de la table ou du comptoir.
- Un cordon d'alimentation court est fourni pour réduire les risques d'enchevêtrement ou de trébuchement. Une rallonge est disponible et peut être utilisée avec prudence. En cas d'utilisation d'une rallonge, la puissance électrique indiquée sur la rallonge doit être au moins aussi grande que la puissance électrique de l'appareil. La rallonge doit être placée de telle sorte qu'elle ne soit pas étalée sur le comptoir ou la table, où elle pourrait être tirée par un enfant ou causer un trébuchement.
- Si vous devez utiliser une rallonge, assurez-vous que la puissance électrique du fil est compatible avec la bouilloire Easy Kettle.
- Évitez de placer l'appareil sur ou près d'un chauffage électrique ou au gaz chaud, ou dans un four chauffé.
- StoreBound ne peut être tenu responsable de tout dommage résultant d'un usage abusif de l'appareil.
- Une utilisation inappropriée de la bouilloire Easy Kettle peut endommager l'appareil ou même causer une blessure.
- Cet appareil a une fiche polarisée (une lame est plus large que l'autre). Pour réduire le risque de décharge électrique, cette fiche est conçue pour ne pouvoir s'insérer dans une prise polarisée que dans un sens. Si la fiche n'entre pas complètement dans la prise, inversez-la. Si elle n'entre toujours pas, contactez un électricien qualifié. Ne modifiez pas la fiche de quelque façon que ce soit.

CONSIGNES DE SÉCURITÉ IMPORTANTES : VEUILLEZ LIRE ET CONSERVER CE MANUEL D'INSTRUCTION ET D'ENTRETIEN.

PARTS & FEATURES



SAFETY FEATURES



Boil-Dry Safety Protection

A safety feature that automatically shuts off the Easy Kettle when there is little or no water in the pot. The Kettle will shut off automatically in approximately 20 seconds. In case of automatic shut-off, let the Kettle cool before attempting to add water.



Cool-Touch Handle

Handle stays cool while the Kettle is in use, providing for easy and safe pouring even when the Kettle's surface is still hot.

SETTING UP YOUR EASY KETTLE

WARNING: The Easy Kettle and its Power Base are NOT dishwasher safe.

ATTENTION: Do not use abrasive scrubbers, sponges, or chemical cleaners as they will damage the appliance.

- Clean your Easy Kettle thoroughly before using. Always unplug the appliance prior to cleaning or storing.
- Remove all packaging material and stickers, and sterilize your Kettle before first use.
- Using a dish brush, wash the inside of the Kettle with warm, soapy water.
- Fill the Kettle to the MAX line, place on the Power Base, and turn on. Once the Kettle automatically turns off, carefully discard the boiling water.

USING YOUR EASY KETTLE

WARNING: Never fill the Kettle above the Max 1.7L marker. Exceeding 1.7L can result in electric shock.

- Use extreme caution when pressing the Lid Release Button as the Lid opens quickly and escaping steam may cause personal injury.
- Place the appliance on a level surface and ensure that the power cord is not hanging over any tabletops or counter spaces.
- Open the Lid, fill the Kettle with water (ensure that the water level rises above the MIN line on the Kettle and remains below the MAX line), and close the Lid.
- Place the Kettle on the Power Base, press the Power Switch and the Indicator Light will illuminate to signal that the Kettle is heating up.
- When the Kettle is heating the water, do not remove the Kettle from the Power Base.
- After the water begins to boil, the Power Switch and the Indicator Light will shut off automatically.
- Remove the Kettle from the Power Base. If you need to boil the water again, wait for 30-60 seconds before pressing the Power Switch.
- When finished using this product, place the Kettle on the Power Base and unplug the appliance. The power cord can be concealed by wrapping it beneath the Power Base.

CLEANING & MAINTENANCE

- **IMPORTANT NOTE:** DO NOT SUBMERGE POWER BASE OR KETTLE IN WATER OR ANY OTHER LIQUIDS. TO AVOID DAMAGING THE APPLIANCE, NEVER USE ABRASIVE OR HARSH CLEANING PRODUCTS TO CLEAN THE KETTLE SURFACE.
- In order to keep your Dash Easy Kettle in pristine working order, follow the cleaning recommendations periodically.
- Fill the Kettle with water up to the 1L mark. Place on the Power Base and press the Power Switch to turn on.
- After the water comes to a boil and the Kettle automatically shuts off, remove Kettle from the Power Base. Pour in a small amount of dish soap and soak overnight or for 8 - 12 hours.
- Pour out the soapy water and rinse until no suds remain. Fill the Kettle with 1L of clean water and bring to a boil. Carefully pour out the hot water.
- Allow your Easy Kettle to cool, then thoroughly dry with a soft cloth.
- Note: Make sure that the Kettle, Power Base, and cord are completely dry before storing.



MAX
1.7 L

1.5 L

1.25 L

1.0 L

0.75 L

0.5 L
MIN

DASH 

The background is a vibrant red color with a repeating pattern of various food and drink icons in a lighter red shade. The icons include fruits like apples, bananas, grapes, and oranges; vegetables like carrots, onions, and leafy greens; and beverages like coffee cups, smoothies, and glasses. There are also icons of a chef's hat and a bowl of food.

HOT IDEAS

At Dash, we believe that happiness is homemade, so get ready to get cooking. Here are some ideas for foods and beverages that you can make with your Dash Easy Kettle.



French Press Coffee



Miso Soup



Ramen Noodles



Bouillon Soup



Hot Tea



Hot Cereal



Couscous



Oatmeal



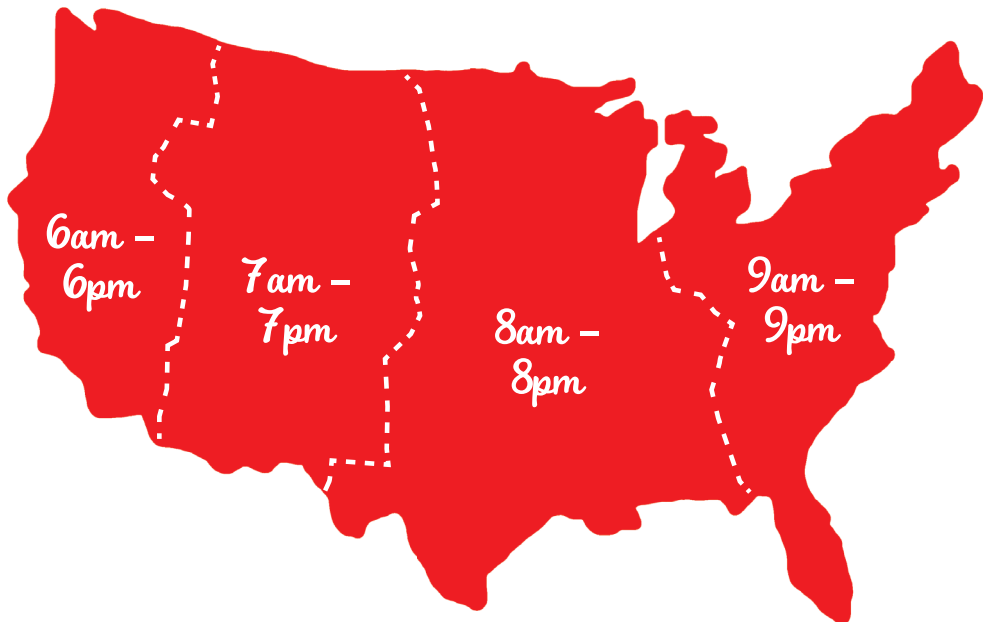
Hot Chocolate

CUSTOMER SUPPORT

**FEEL GOOD
GUARANTEE™**

Dash values quality and workmanship and stands behind this product with our Feel Good Guarantee™. To learn more about our commitment to quality, visit bydash.com/feelgood.

Our customer support teams in the US and Canada are at your service Monday - Friday during the times below.
Contact us at **1 (800) 898-6970** or support@bydash.com



Hey **Hawaii!** You can reach our customer service team from **3 AM to 3PM**.
And also, **Alaska**, feel free to reach out from **5AM to 5PM**.

STOREBOUND, LLC - 1 YEAR LIMITED WARRANTY

Your StoreBound product is warranted to be free from defects in material and workmanship for a period of one (1) year from the date of the original purchase when utilized for normal and intended household use. Should any defect covered by the terms of the limited warranty be discovered within one (1) year, StoreBound, LLC will repair or replace the defective part. To process a warranty claim, contact Customer Support at 1-800-898-6970 for further assistance and instruction. A Customer Support agent will assist you by troubleshooting minor problems. If troubleshooting fails to fix the problem, a return authorization will be issued. Proof of purchase indicating the date and place of purchase is required and should accompany the return. You must also include your full name, shipping address, and telephone number. We are unable to ship returns to a PO box. StoreBound will not be responsible for delays or unprocessed claims resulting from a purchaser's failure to provide any or all of the necessary information. Freight costs must be prepaid by the purchaser.

Send all inquiries to support@bydash.com.

There are no express warranties except as listed above.

REPAIR OR REPLACEMENT AS PROVIDED UNDER THIS WARRANTY IS THE EXCLUSIVE REMEDY OF THE CUSTOMER. STOREBOUND SHALL NOT BE LIABLE FOR ANY INCIDENTAL OR CONSEQUENTIAL DAMAGES OR FOR BREACH OF ANY EXPRESS OR IMPLIED WARRANTY ON THIS PRODUCT EXCEPT TO THE EXTENT REQUIRED BY APPLICABLE LAW. ANY IMPLIED WARRANTY OF MERCHANTABILITY OR FITNESS FOR A PARTICULAR PURPOSE ON THIS PRODUCT IS LIMITED IN DURATION TO THE DURATION OF THIS WARRANTY.

Some states do not allow the exclusion or limitation of incidental or consequential damages, or limitations on how long an implied warranty lasts. Therefore, the above exclusions or limitations may not apply to you. This warranty gives you specific legal rights and you may also have other rights, which vary from state to state.

REPAIRS

DANGER! Risk of electric shock! The Dash Easy Kettle is an electrical appliance.

Do not attempt to repair the appliance yourself under any circumstances.

Contact Customer Support regarding repairs to the appliance.

TECHNICAL SPECIFICATIONS

Voltage 120V ~ 60Hz

Power Rating 1200 W

Stock#: DEZK003_20170922_V7



1-800-898-6970 | @bydash | bydash.com