



*recipes
inside!*

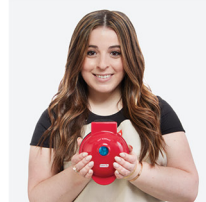
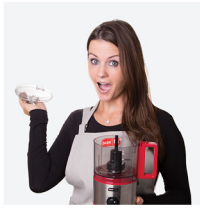


#DSSVS200

SUPERSEAL™ VACUUM SEALER

Instruction Manual | Recipe Ideas





SUPERSEAL™ VACUUM SEALER

- Important Safeguards..... 4-9
- Parts & Features..... 10
- Using Your SuperSeal™ Vacuum Sealer..... 11-14
- Cleaning & Maintenance 15
- Troubleshooting..... 18
- Recipe Ideas 20
- Customer Support 22
- Warranty..... 23

the dash team!

IMPORTANT SAFEGUARDS: PLEASE READ AND SAVE THIS INSTRUCTION AND CARE MANUAL.

When using electrical appliances, basic safety precautions should be followed, including:

- Read the User Manual carefully for all operating instructions before first use.
- Remove all bags and packaging from the appliance before use.
- Never leave the appliance unattended when in use.
- Make sure the appliance is cleaned thoroughly before using.
- Do not use appliance for other than intended use. For household use only. Do not use outdoors.
- Do not use this appliance on wet surfaces or in humid environments.
- To protect against electric shock, do not immerse any part of this appliance, power cord or plug in water or other liquid. Unplug from outlet when not in use and before cleaning.
- To disconnect, unplug power cord from electrical outlet. Do not disconnect by pulling on power cord.
- Do not place on or near a hot gas or electric boiler, or heated oven. Extreme caution must be used when moving products containing hot liquids.
- Do not operate this appliance with a damaged cord, damaged plug, after the appliance malfunctions, is dropped or is damaged in any manner. Return appliance to the nearest authorized service facility for examination, repair or adjustment.
- For maintenance other than cleaning, please contact StoreBound directly at 1-800-898-6970 Monday - Friday or by email at support@bydash.com.
- This appliance can be used by persons with reduced physical,

- sensory or mental capabilities or lack of experience or knowledge, if they have been given supervision or instruction concerning use of the appliance in a safe way and understand the hazards involved.
- This appliance is not a toy. Do not let children use this appliance. Close supervision is necessary when any kitchen appliance is used by or near children.
- Always be sure to unplug the appliance from outlet prior to moving, cleaning, storage and when not in use.
- StoreBound shall not accept liability for damages caused by improper use of the appliance.
- Improper use of the Vacuum Sealer can result in property damage or personal injury.
- This appliance has a polarized plug (one blade is wider than the other). To reduce the risk of electric shock, this plug will fit in a polarized outlet only one way. If the plug does not completely fit in the outlet, reverse the plug. If it still does not fit, contact a qualified electrician. Do not attempt to modify the plug in any way.
- A short power supply cord is to be provided to reduce the risk resulting from becoming entangled in or tripping over a longer cord. An extension cord may be used if care is exercised in its use. If an extension cord is used, the marked electrical rating of the extension cord should be at least as great as the electrical rating of the appliance. If the appliance is of the grounded type, the extension cord should be a grounding 3-wire cord. The extension cord should be arranged so that it will not drape over the countertop or tabletop where it can be pulled on by children or tripped over unintentionally.

IMPORTANT SAFEGUARDS: PLEASE READ AND SAVE THIS INSTRUCTION AND CARE MANUAL.

GARANTIES IMPORTANTES: VEUILLEZ LIRE ET CONSERVER CE MODE D'EMPLOI ET D'ENTRETIEN

L'utilisation d'appareils électriques nécessite de prendre des mesures de sécurité de base, y compris:

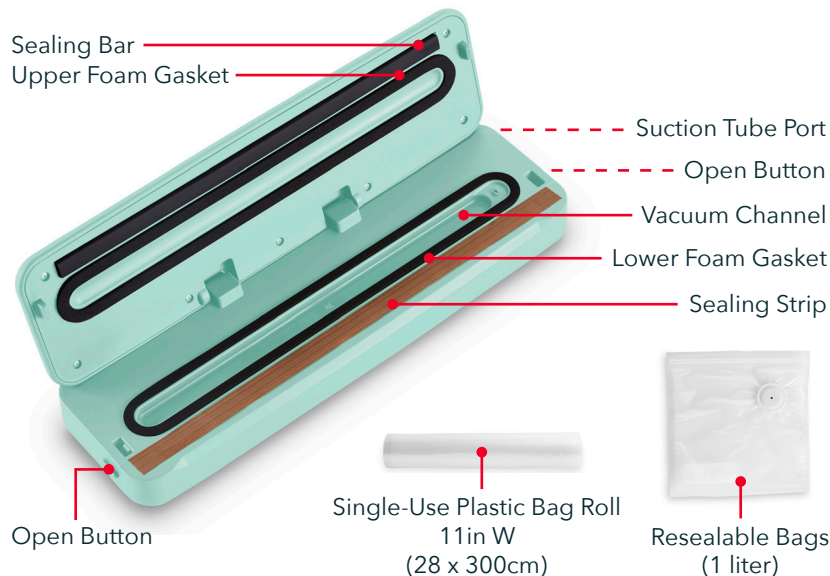
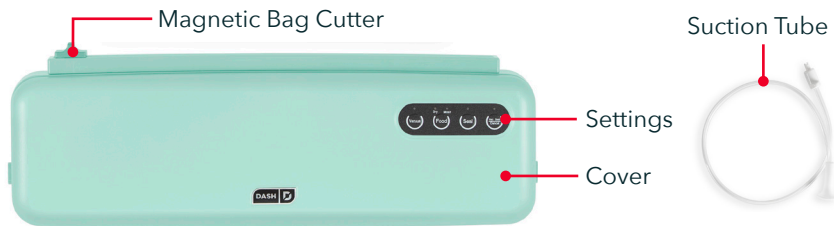
- Veuillez lire le manuel de l'utilisateur attentivement pour connaître le mode d'emploi avant une première utilisation.
- Retirez tout sac et tout emballage de l'appareil avant de l'utiliser.
- Ne laissez jamais l'appareil sans surveillance lorsqu'il est en marche.
- Assurez-vous de nettoyer soigneusement l'appareil avant de l'utiliser.
- N'utilisez pas l'appareil à des fins autres que celles prévues. Pour un usage domestique uniquement. Ne l'utilisez pas à l'extérieur.
- N'utilisez pas cet appareil sur des surfaces mouillées ou dans des environnements humides.
- Afin de prévenir les chocs électriques, ne plongez pas toute pièce de cet appareil, le cordon d'alimentation ou la fiche électrique dans de l'eau ou tout autre liquide. Débranchez la prise lorsqu'elle n'est pas utilisée et avant de la nettoyer.
- Pour le déconnecter, débranchez le cordon d'alimentation de la prise de courant. Ne le déconnectez pas en tirant sur le cordon d'alimentation.
- Ne placez pas l'appareil sur ou près d'une chaudière électrique ou à gaz, ou dans un four chaud. Faites extrêmement attention lorsque vous déplacez des produits contenant des liquides chauds.
- N'utilisez pas l'appareil si le cordon ou la fiche sont endommagés, après un dysfonctionnement ou une chute ou tout autre dommage quelconque de l'appareil. Retournez l'appareil à l'établissement de service agréé le plus proche pour l'examen, la réparation ou le réglage.
- Pour toute question liée à l'entretien autre que le nettoyage, veuillez contacter StoreBound

directement au 1-800-898-6970 du lundi au vendredi, ou par courriel à support@bydash.com.

- Cet appareil peut être utilisé par des personnes dont les capacités physiques, sensorielles ou mentales sont réduites ou manquant d'expérience ou de connaissances, à condition qu'elles soient supervisées ou qu'elles aient reçu des directives relatives à l'utilisation sécuritaire de l'appareil et qu'elles comprennent les risques et les dangers en jeu.
- Cet appareil n'est pas un jouet. Ne laissez pas d'enfants utiliser cet appareil. Une étroite surveillance est nécessaire lorsqu'un appareil est utilisé par ou à proximité d'enfants.
- Assurez-vous de toujours débrancher l'appareil de la prise avant de le déplacer, le nettoyer et le ranger ainsi que lorsque vous ne l'utilisez pas.
- StoreBound ne peut être tenu responsable de tout dommage résultant d'un usage abusif de l'appareil.
- Une mauvaise utilisation de l'appareil peut causer des dommages matériels ou des blessures corporelles.
- Cet appareil a une fiche polarisée (une lame est plus large que l'autre). Pour réduire le risque de décharge électrique, cette fiche est conçue pour ne pouvoir s'insérer dans une prise polarisée que dans un sens. Si la fiche n'entre pas complètement dans la prise, inversez-la. Si elle n'entre toujours pas, contactez un électricien qualifié. N'essayez pas d'altérer la fiche de quelque façon que ce soit.
- Un cordon d'alimentation court est fourni pour réduire les risques d'enchevêtrement ou de trébuchement. Une rallonge peut être utilisée avec prudence. En cas d'utilisation d'une rallonge, la puissance électrique indiquée sur la rallonge doit être au moins aussi grande que la puissance électrique de l'appareil. Si l'appareil est de type terre, la rallonge doit être un cordon à 3 fils de type terre. La rallonge doit être placée de telle sorte qu'elle ne soit pas étalée sur le comptoir ou la desserte, où elle pourrait être tirée par un enfant ou causer un trébuchement.

GARANTIES IMPORTANTES: VEUILLEZ LIRE ET CONSERVER CE MODE D'EMPLOI ET D'ENTRETIEN

PARTS & FEATURES



USING YOUR SUPERSEAL™ VACUUM SEALER



Vacuum

Used with the Suction Tube and Resealable Bags. Activates only the vacuum. The indicator light will turn on when the sealing process has started.

Food - Switches settings between Dry and Moist. Once the appliance is plugged in, one of these will always be lit.

Dry - Suitable for anything without liquids, like dry goods, meat and vegetables.

Moist - Suitable for anything with moist ingredients, like marinated meats.

Seal - Activates only the sealer. Perfect for Sous Vide and resealing Mylar bags. After cutting a desired amount of plastic from your Plastic Bag Roll, use this to create a seal on one end, then fill your bag. If desired, apply two seals for extra protection, but NEVER apply a seal on top of another seal: always apply the second seal alongside the first.

Vacuum & Seal / Cancel

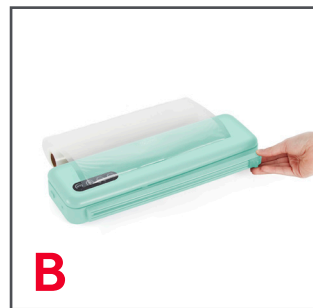
Used with Single-Use Bags. Starts a cycle of both vacuuming and sealing. The appliance automatically shuts off when finished, but use this to cancel a cycle early when vacuum sealing delicate things (like bread or baked goods), preserving their shape.

SINGLE-USE BAGS & BAG CUTTER



- 1 Place the appliance on a stable and dry surface and plug it in. To create a plastic bag, unroll the Plastic Bag Roll and drape a desired amount over the top of the device (**photo A**).

Scan code for more information and how-to video!



- 2 Attach the Magnetic Bag Cutter to the grooves on the back of the vacuum sealer, over the draped plastic (or if the cutter is already attached, remove and reattach cutter over the draped plastic) (**photo B**). Cut the plastic while securely holding the cutter in place, holding from either the left or right side.
- 3 Create a seal on one side of your bag by opening the device and placing one of the open sides of the plastic on the Sealing Strip, aligning the end of the plastic with the strip (**photo C**).



- 4** Close the device by pushing down the cover. Make sure both sides snap in: you'll hear a click on each side when it's properly closed. Press the Seal button to create a seal. Once the light is off, the seal is complete. To open the sealer again, push the Open Buttons on each side of the sealer at the same time. (photo D).

TIP: For extra strength, apply a second seal next to your first seal by repeating Steps 3 & 4 with the unsealed plastic next to your first seal. DO NOT apply a second seal over your first seal.

- 5** Add what you'd like to seal to the open side of your plastic bag. You MUST keep the top two inches (2") of your bag free of solids or liquids for it to vacuum seal properly (photo E).



- 6** Open the device and press the open side of your plastic bag into the Vacuum Channel. Close the device and use the Food button to choose either Dry and Moist, depending on what you're vacuum sealing (photo F).

- 7** Press the Vacuum & Seal button (Vac Seal / Cancel) to vacuum seal your goods. The light above the Vacuum & Seal button will automatically shut off when finished (photo G).



RESEALABLE BAGS



- 1** Fill a Resealable Bag with what you'd like to vacuum seal. You **MUST** keep the top two inches (2") of your bag free of solids or liquids for it to vacuum seal properly. Close the bag by running your fingers along the seal at the top, making sure it is completely shut **(photo A)**.
- 2** Close your vacuum sealer firmly and correctly: it will not vacuum seal if left open. Plug the plastic side of the Suction Tube into the Port on the right side of the device. Make sure it's in all the way **(photo B)**.



- 3** Cover the plastic vent on your Resealable Bag with the silicone end of the Suction Tube. Be careful not to press the end of the tube down too hard, as this will make it harder to properly vacuum seal. You can gently apply pressure or use your fingers to keep the edges of the silicone suction cup held down while the device is in use **(photo C)**.
- 4** Press the Vacuum button to vacuum seal your goods. Be sure to hold the silicone end of the Suction Tube in place while the device is in use (as described in Step 3). The light above the Vacuum button will automatically shut off when finished. **(photo D)**.

- 1** After 15 consecutive vacuum seal cycles, the Vacuum Sealer must rest for 15 minutes. This prevents the device from overheating. Failing to do so may damage the product. Every 15 cycles, the sealer will enter a safety protocol where it cannot be used for two minutes.
- 2** When sealing with either the Resealable or Single-Use Bags, you must leave at least two inches (2") of space at the top of the bag. This allows room for the plastic to close tightly around the contents of the bag and prevents it from pulling out of the Vacuum Channel during sealing.
- 3** When sealing delicate items, like breads or baked goods, press the Vacuum & Seal / Cancel button to stop a cycle early and preserve their shape.
- 4** While sealing, small amounts of liquids, solids or food particles may be pulled into the Vacuum Channel. Check the Channel before every cycle and wipe clean if necessary.
- 5** For best results, only use the included Single Use and Resealable bags.
- 6** Vacuum sealing is NOT a substitute for the heat process of canning. Perishables still need to be refrigerated or frozen.
- 7** Do not create your own seals on the sides of the Single-Use bags, these are made by the manufacturer and do not require an additional seal.
- 8** If you are vacuum sealing items with sharp edges or corners, wrap them in a soft or cushioning material to protect the bag from punctures.

The SuperSeal Vacuum Sealer is NOT dishwasher-safe. To clean, wipe parts with a damp towel or non-abrasive sponge and dry.

Both Foam Gaskets can be removed and wiped clean.

The Reusable Plastic bags can be hand washed with soap and water.

When storing the vacuum sealer, do NOT fully close the Cover into the base of the sealer: this will compress the gaskets over time and may damage them. To ensure the longevity of your product, store with the Cover closed but not locked into the base.

While Dash products are durable, you may encounter one or more of the problems listed below. If the issue is either not solved by the solutions recommended below or not included on this page, please contact our Customer Support Team at 1-800-898-6970 or support@bydash.com.

ISSUE	SOLUTION
The Vacuum Pump is running, but air isn't being released.	<ol style="list-style-type: none"> 1. If using a Single-Use bag, make sure one end of the bag is sealed (see Steps 3 and 4 in the Single-Use bag instructions). 2. Make sure there is at least 2 inches free of solids or liquids inside the top of the bag. 3. Check for wrinkles in the bag along the Sealing Strip. To prevent wrinkles, gently stretch the bag while inserting into the Vacuum Channel. 4. Make sure the Gaskets are inserted properly and are clean. 5. The Gaskets may be compressed. Unlock the lid and wait 10 to 20 minutes for the Gaskets to expand.
The bag will not seal properly.	<ol style="list-style-type: none"> 1. Check for wrinkles in the bag along the Sealing Strip. To prevent wrinkles, gently stretch the bag while inserting into the Vacuum Channel. 2. Check for debris near the Sealing Strip.

ISSUE	SOLUTION
One of the Gaskets is loose or damaged.	<ol style="list-style-type: none"> 1. Take out the Gasket, clean it and reinsert it into the Vacuum Sealer. If damaged, contact Dash support for a replacement.
The Setting lights aren't turning on.	<ol style="list-style-type: none"> 1. Make sure the Vacuum Sealer is properly plugged into a working outlet.
Air was removed from the bag, but now air has re-entered.	<ol style="list-style-type: none"> 1. Examine the bag's seals. A wrinkle along the seal may cause air to re-enter the bag. If using a Resealable Bag, make sure the seal at the top is firmly and properly closed. 2. Sometimes food or moisture along the seal prevents the bag from sealing properly. Cut the bag open, wipe the top inside of the bag and reseal (or if using a Resealable Bag, just open the top, wide down the inside of the seal and close). 3. Sharp items may have punctured the bag, check for holes and replace if necessary.

RECIPE IDEAS



Follow us!

@bydash | recipes, videos, & inspiration
@unprocessyourfood | veg & vegan-friendly meals



VEGETABLES



ROASTED CHICKEN



BREADS



SAUCES



SOUPS



MEATS



SMOOTHIES



FISH



MARINADES

FEEL GOOD GUARANTEE™

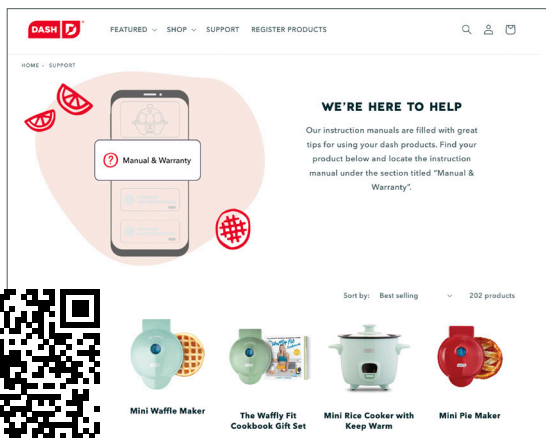
Dash values quality and workmanship and stands behind this product with our Feel Good Guarantee™. To learn more about our commitment to quality, visit bydash.com/feelgood.

We're here to help! Our customer support teams in the US and Canada are at your service Monday - Friday. Contact us at **1 (800) 898-6970** or support@bydash.com.

scan here



bydash.com/help



STOREBOUND, LLC - 1 YEAR LIMITED WARRANTY

Your StoreBound product is warranted to be free from defects in material and workmanship for a period of one (1) year from the date of the original purchase when utilized for normal and intended household use. Should any defect covered by the terms of the limited warranty be discovered within one (1) year, StoreBound, LLC will repair or replace the defective part. To process a warranty claim, contact Customer Support at 1-800-898-6970 for further assistance and instruction. A Customer Support agent will assist you by troubleshooting minor problems. If troubleshooting fails to fix the problem, a return authorization will be issued. Proof of purchase indicating the date and place of purchase is required and should accompany the return. You must also include your full name, shipping address, and telephone number. We are unable to ship returns to a PO box. StoreBound will not be responsible for delays or unprocessed claims resulting from a purchaser's failure to provide any or all of the necessary information. Freight costs must be prepaid by the purchaser.

Send all inquiries to support@bydash.com. There are no express warranties except as listed above.

REPAIR OR REPLACEMENT AS PROVIDED UNDER THIS WARRANTY IS THE EXCLUSIVE REMEDY OF THE CUSTOMER. STOREBOUND SHALL NOT BE LIABLE FOR ANY INCIDENTAL OR CONSEQUENTIAL DAMAGES OR FOR BREACH OF ANY EXPRESS OR IMPLIED WARRANTY ON THIS PRODUCT EXCEPT TO THE EXTENT REQUIRED BY APPLICABLE LAW. ANY IMPLIED WARRANTY OF MERCHANTABILITY OR FITNESS FOR A PARTICULAR PURPOSE ON THIS PRODUCT IS LIMITED IN DURATION TO THE DURATION OF THIS WARRANTY.

Some states do not allow the exclusion or limitation of incidental or consequential damages, or limitations on how long an implied warranty lasts. Therefore, the above exclusions or limitations may not apply to you. This warranty gives you specific legal rights and you may also have other rights, which vary from state to state.

Refurbished items or items not purchased through an authorized retailer are not eligible for warranty claims.

REPAIRS

DANGER! Risk of electric shock! The Dash SuperSeal™ Vacuum Sealer is an electrical appliance. Do not attempt to repair the appliance yourself under any circumstances. Contact Customer Support regarding repairs to the appliance.

TECHNICAL SPECIFICATIONS

Voltage 120V ~ 60Hz
 Power Rating 130W
 Stock#: DSSVS200_20220411_V6



1-800-898-6970 | @bydash | bydash.com