



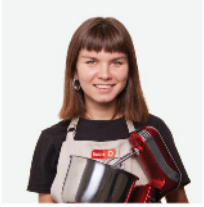
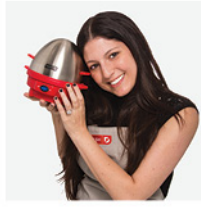
*recipes  
inside!*

#DWBM007

# EXPRESS WAFFLE BITE MAKER

Instruction Manual | Recipe Guide





# EXPRESS WAFFLE BITE MAKER

- Important Safeguards ..... 4-9
- Parts & Features ..... 10
- Using Your Express Waffle Bite Maker ..... 11-14
- Cleaning & Maintenance ..... 15
- Troubleshooting ..... 16-17
- Recipes ..... 19-25
- Customer Support ..... 26
- Warranty ..... 27

*the dash team!*

# IMPORTANT SAFEGUARDS: PLEASE READ AND SAVE THIS INSTRUCTION AND CARE MANUAL.

When using electrical appliances, basic safety precautions should be followed, including:

- Read all instructions.
- Remove all bags and packaging from appliance before use.
- Never leave appliance unattended when in use.
- Make sure the appliance is cleaned thoroughly before using.
- Do not use appliance for other than intended use. For household use only. Do not use outdoors.
- Warning: Hot surfaces! Never touch the Cooking Surface or Cover while appliance is in use. Always lift and lower the Cover by the Cover Handle.
- DO NOT lift the Cover so that your arm is over the Cooking Surface as it is hot and may cause injury. Lift from the side.
- To prevent the risk of fire, electric shock, or personal injury, do not put cord, plug, or appliance in or near water or other liquids. The Express Waffle Bite Maker is NOT dishwasher safe.
- Never use abrasive cleaning agents to clean your appliance as this may damage the Express Waffle Bite Maker and its nonstick Cooking Surface.
- Do not operate this appliance with a damaged cord, damaged plug, after the appliance malfunctions, is dropped, or damaged in any manner. Return appliance to the nearest authorized service facility for examination, repair or adjustment.
- DO NOT use the Express Waffle Bite Maker near water or other liquids, with wet hands, or while standing on a wet surface.

- For maintenance other than cleaning, please contact StoreBound directly at 1-800-898-6970 from 9AM - 9PM EST Monday - Friday or by email at support@bydash.com.
- Do not use metal utensils on the Cooking Surface as this will damage the nonstick surface.
- This appliance can be used by persons with reduced physical, sensory or mental capabilities or lack of experience or knowledge, if they have been given supervision or instruction concerning use of the appliance in a safe way and understand the hazards involved.
- This appliance is not a toy. Do not let children use this appliance. Close supervision is necessary when any kitchen appliance is used by or near children.
- Do not place appliance on or near a hot gas burner, hot electric burner, or in a heated oven.
- Be cautious when moving an appliance containing hot oils or other hot liquids.
- Refrain from using attachments that are not recommended by the appliance manufacturer, as this may result in fire, electric shock, or personal injury.
- Allow Express Waffle Bite Maker to cool completely before moving, cleaning, or storing.
- Do not let the cord touch hot surfaces or hang over the edge of tables or counters.
- Always be sure to unplug the appliance from outlet prior to moving, cleaning, storage, and when not in use.
- StoreBound shall not accept liability for damages caused by improper use of the appliance.
- Improper use of the Express Waffle Bite Maker can result in property damage or even in personal injury.
- This appliance has a polarized plug (one blade is wider than the other). To reduce the risk of electric shock, this plug will fit in a polarized outlet only one way. If the plug does not completely fit in the outlet, reverse the plug. If it still does not fit, contact a qualified electrician. Do not attempt to modify the plug in any way.

- A short power supply cord is to be provided to reduce the risk resulting from becoming entangled in or tripping over a longer cord. An extension cord may be used if care is exercised in its use. If an extension cord is used, the marked electrical rating of the extension cord should be at least as great as the electrical rating of

the appliance. If the appliance is of the grounded type, the extension cord should be a grounding 3-wire cord. The extension cord should be arranged so that it will not drape over the countertop or tabletop where it can be pulled on by children or tripped over unintentionally.

**IMPORTANT SAFEGUARDS: PLEASE READ AND SAVE THIS INSTRUCTION AND CARE MANUAL.**

# GARANTIES IMPORTANTES: VEUILLEZ LIRE ET CONSERVER CE MODE D'EMPLOI ET D'ENTRETIEN

L'utilisation d'appareils électriques nécessite de prendre des mesures de sécurité de base, y compris:

- Lisez toutes les instructions.
- Retirez tout sac ou emballage de l'appareil avant utilisation.
- Ne laissez jamais l'appareil sans surveillance pendant son utilisation.
- Assurez-vous que l'appareil est minutieusement nettoyé avant utilisation.
- N'utilisez pas l'appareil en dehors de son utilisation prévue. Pour usage ménager uniquement. Ne l'utilisez pas à l'extérieur.
- **AVERTISSEMENT:** Surfaces chaudes ! Ne touchez jamais la surface de cuisson ou le couvercle pendant l'utilisation de l'appareil. Soulevez et baissez toujours le couvercle à l'aide de sa poignée.
- NE soulevez PAS le couvercle pour que votre bras se trouve au-dessus de la surface de cuisson brûlante, car cela pourrait entraîner des blessures. Soulevez par le côté.
- Afin d'éviter les risques de feux, d'électrocution, ou de dommages corporels, ne mettez pas le cordon, la prise ou l'appareil dans ou à proximité de l'eau ou d'autres liquides. Le mini gaufrier n'est PAS lavable en machine.
- N'utilisez jamais des produits d'entretien abrasifs pour nettoyer l'appareil, car cela pourrait endommager le mini gaufrier et sa surface de cuisson anti-adhérente.
- N'utilisez pas cet appareil avec un cordon ou une prise endommagé(e), ou si l'appareil est défaillant, s'il est tombé ou endommagé de quelque façon. Pour toute inspection, réparation ou ajustement, ramenez

## GARANTIES IMPORTANTES

l'appareil au détaillant agréé le plus proche.

- N'utilisez PAS le mini gaufrier à proximité de l'eau ou d'autres liquides, avec des mains mouillées, ou si vous vous tenez sur une surface mouillée.
- Pour toute question liée à l'entretien autre que le nettoyage, veuillez contacter StoreBound directement au 1-800-898-6970 de 9h à 21h HNE du lundi au vendredi, ou par courriel à support@bydash.com.
- N'utilisez pas d'ustensiles en métal sur la surface de cuisson car cela endommagerait la surface anti-adhérente.
- Cet appareil peut être utilisé par des personnes dont les capacités physiques, sensorielles ou mentales sont réduites ou qui manquent d'expérience et de connaissances, à condition qu'elles aient reçu une supervision ou des instructions concernant l'utilisation de l'appareil en toute sécurité et qu'elles comprennent les risques encourus.
- L'appareil n'est pas un jouet. Ne laissez pas d'enfants utiliser cet appareil. Une étroite surveillance est nécessaire lorsqu'un appareil

est utilisé par ou à proximité d'enfants.

- and remove this bullet: Une attention particulière doit être apportée quand l'appareil est utilisé par ou à proximité d'enfants.
- Ne placez pas l'appareil sur ou à proximité d'un brûleur à gaz ou électrique, ou d'un four chaud.
- Faites attention lorsque vous déplacez un appareil contenant des huiles chaudes ou d'autres liquides chauds.
- Évitez d'utiliser des accessoires qui ne sont pas recommandés par le fabricant de l'appareil, car ils pourraient entraîner un feu, une électrocution ou un dommage corporel.
- Laissez le mini gaufrier refroidir complètement avant tout déplacement, nettoyage ou entreposage.
- Une attention particulière doit être apportée quand l'appareil est utilisé par ou à proximité d'enfants.
- Ne laissez pas le cordon toucher des surfaces chaudes ou pendre au niveau des bords de tables

## GARANTIES IMPORTANTES

ou de comptoirs.

- Assurez-vous toujours de débrancher l'appareil de la prise électrique avant tout déplacement, nettoyage ou entreposage.
- StoreBound n'est nullement responsable des dommages causés par une mauvaise utilisation de l'appareil.
- Une mauvaise utilisation du mini gaufrier peut entraîner des dommages matériels ou même des dommages corporels.
- Cet appareil a une fiche polarisée (un des brins est plus large que l'autre). Afin de réduire le risque d'électrocution, cette fiche ne s'insère dans la prise électrique que d'une façon. Si la fiche ne s'insère pas complètement dans la prise, inversez la fiche. Si elle ne

s'insère toujours pas, contactez un électricien qualifié. N'essayez pas de modifier la fiche de quelque façon que ce soit.

- Un cordon d'alimentation court doit être fourni afin d'éviter le risque d'emmêlement ou de trébuchement lié aux cordons plus longs. Une rallonge peut être utilisée à condition de faire attention. Si une rallonge est utilisée, la puissance électrique indiquée sur la rallonge doit être au moins aussi grande que celle de l'appareil. Si l'appareil est connecté à la terre, la rallonge doit être un cordon tripolaire avec prise de terre. La rallonge doit être disposée de manière à ne pas reposer sur le comptoir ou sur la table où elle peut être tirée par un enfant ou source de trébuchement involontaire.

**GARANTIES IMPORTANTES:**  
VEUILLEZ LIRE ET CONSERVER CE  
MODE D'EMPLOI ET D'ENTRETIEN



Before first use, remove all packaging material and thoroughly clean your Express Waffle Bite Maker.



Never touch the Cooking Surface or Cover while appliance is in use.



DO NOT lift the Cover so that your arm is over the Cooking Surface as it is hot and may cause injury.



Always lift and lower the Cover by the Cover Handle. Lift from the side.

## USING YOUR EXPRESS WAFFLE BITE MAKER



- 1 Place the appliance on a stable and dry surface. Plug the cord into a power outlet. The Indicator Light (photo A) will illuminate, signaling that the Waffle Bite Maker is heating up. Once the Cooking Surface reaches the optimal cooking temperature, the Indicator Light will turn off. Now, you're ready to get cooking!
- 2 Carefully lift the Cover by the Cover Handle (photo B).

## USING YOUR EXPRESS WAFFLE BITE MAKER



- 3 Spray both Cooking Surfaces with a small amount of non-aerosol cooking oil (photo C).
- 4 Pour about 2 tbsps of batter onto each place of the cooking surface (photo D) and close the Cover. The center waffle may cook more quickly (and darken more) than outside waffles. For best results, add batter to the center plate of the Cooking Surface last. Cooking should take about 3 minutes per batch.

*Chef Tip!*



Aerosol cooking sprays often contain additives that can cause nonstick surfaces to become sticky and hard to clean over time. To ensure the longevity of your product, use a spray bottle and a neutral oil (vegetable, canola, etc.) to lubricate cooking surfaces.





- 5** Once waffle bites are cooked to your preference, carefully remove them from the Cooking Surface with a heat-resistant nylon, wood or silicone cooking utensil (photo E).
- NOTE:** Do not use metal utensils to remove or place food on the Cooking Surface as this will damage the nonstick surface.
- 6** When you have finished cooking, unplug your Waffle Bite Maker and allow it to cool before moving or cleaning (photo F).

- Always allow the appliance to cool completely before moving, cleaning, or storing. Do not submerge appliance in water or any other liquids.
- Never use abrasive cleaning agents to clean your appliance as this may damage the Waffle Bite Maker.
- In order to keep your Waffle Bite Maker in pristine working order, thoroughly clean the appliance after each use. This will prevent the buildup of food or oil.
- Unplug Waffle Bite Maker and allow it to cool completely.
- Using a damp, soapy cloth, wipe down the Cooking Surfaces and Cover. Thoroughly rinse the cloth and wipe again.
- Thoroughly dry Waffle Bite Maker before storing.
- If there is food burned onto the Cooking Surface, pour on a little cooking oil and let sit for 5 to 10 minutes. Scrub the Cooking Surface with a sponge or soft bristled brush to dislodge food. Use a damp, soapy cloth to wipe down the Cooking Surface. Thoroughly rinse the cloth and wipe again. If any food remains, pour on cooking oil and let sit for a few hours, then scrub and wipe clean.



While Dash products are durable, you may encounter one or more of the problems listed below. If the issue is either not solved by the solutions recommended below or not included on this page, please contact our Customer Support Team at 1-800-898-6970 or support@bydash.com.

ISSUE	SOLUTION
The light on the Waffle Bite Maker keeps shutting off.	<ol style="list-style-type: none"> <li>1. This is normal. During the cooking process, the heating element will automatically turn on and off to regulate the temperature and ensure that the Cooking Surfaces do not get too hot or cold. When this occurs, the Indicator Light turns on and off.</li> </ol>
How do I know when the Waffle Bite Maker is heated and ready to go?	<ol style="list-style-type: none"> <li>1. When the Waffle Bite Maker reaches the optimal temperature, the Indicator Light shuts off and that means you're ready to get cooking!</li> </ol>
There is no On/Off Button. How do I turn the Waffle Bite Maker off and on?	<ol style="list-style-type: none"> <li>1. To turn on, simply plug in the power cord. When you're done cooking, turn off the Waffle Bite Maker by unplugging it.</li> </ol>

ISSUE	SOLUTION
When using my Waffle Bite Maker, the Cover gets very hot. Is this normal?	<ol style="list-style-type: none"> <li>1. Yes, this is completely normal. When using your Waffle Bite Maker, always lift and lower the Cover by the Cover Handle. To prevent personal injury, DO NOT lift the Cover so that your arm is over the Cooking Surface as it is hot and may cause injury. Lift from the side.</li> </ol>
After using my Waffle Bite Maker a few times, food is starting to stick to the surface. What is happening?	<ol style="list-style-type: none"> <li>1. There is probably a build-up of burnt food residue on the Cooking Surface. This is normal, especially when cooking with sugar. Allow the appliance to cool fully, then pour on a little cooking oil and let sit for 5-10 minutes. Scrub Cooking Surface with a sponge or soft bristled brush to dislodge food. Use a damp, soapy cloth to wipe down the Cooking Surface. Rinse the cloth and wipe again. If food remains, pour on cooking oil and let sit for a few hours, then scrub and wipe clean.</li> </ol>
The Indicator Light will not turn on and the Cooking Surface is failing to heat.	<ol style="list-style-type: none"> <li>1. Ensure that the power cord is plugged into the power outlet.</li> <li>2. Check to make sure the power outlet is operating correctly.</li> <li>3. Determine if a power failure has occurred in your home, apartment or building.</li> </ol>



# RECIPE GUIDE



Follow us!

@bydash | recipes, videos, & inspiration

@unprocessyourfood | veg & vegan-friendly meals



# CLASSIC WAFFLE BITES

Yield: 31-33 waffle bites

## Ingredients:

1 cup flour	1 egg
1 tbsp sugar	1 cup milk
2 tsp baking powder	2 tbsp melted butter or vegetable oil
¼ tsp salt	

## Directions:

1. In a medium bowl, sift the flour, sugar, baking powder, and salt. Whisk the egg, milk, and melted butter in a separate bowl. Add the wet ingredients to the dry and mix until just incorporated.
2. Use a non-aerosol oil sprayer or silicone basting brush to apply oil to both cooking surfaces. Pour 2 tbsps of the batter into the Waffle Bite Maker and cook until golden brown. Repeat with the remaining batter.
3. Serve with a drizzle of maple syrup and fresh berries.

*Chef Tip!*



Combine these Classic Waffles with Egg Bites from the Dash Egg Bite Maker to make Egg Bite Sandwiches, great for appetizers or hors d'oeuvres!





## CONFETTI WAFFLE BITES

Yield: 29-31 waffle bites

### *Ingredients:*

1 cup all-purpose flour	1 cup milk
1 tbsp white sugar	2 tbsp melted unsalted butter
2 tsp baking powder	1 tsp real vanilla extract
¼ tsp salt	1 ½ tbsp rainbow sprinkles
1 large egg	

### *Directions:*

1. Mix together flour, sugar, baking powder and salt in a medium bowl.
2. Whisk together milk, egg, and melted butter and vanilla in a separate bowl. Add the wet ingredients to the dry and mix until combined. Add the rainbow sprinkles and mix to combine.
3. Use a non-aerosol oil sprayer or silicone basting brush to apply oil to both cooking surfaces. Add 2 tbsps of waffle mix to your Express Waffle Bite Maker and cook until golden brown on both sides.

*Chef Tip!*



A bit of food coloring in the batter adds a playful touch!



# CHOCOLATE WAFFLE BITES

Yield: 8-10 waffle bites

## Ingredients:

¾ cup all-purpose flour

2 tbsp sugar

¼ cup unsweetened cocoa powder

2 tbsp melted butter

1 cup buttermilk

½ tsp baking powder

¼ tsp baking soda

1 large egg

½ cup mini chocolate chips

¼ cup water

## Directions:

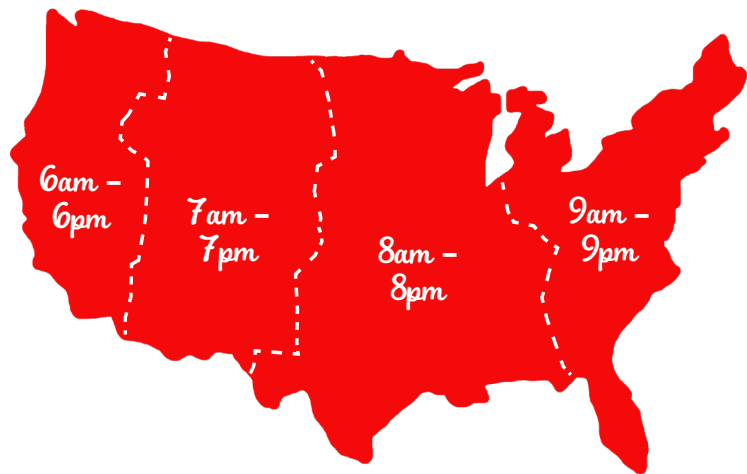
1. In a medium bowl, sift together the flour, sugar, cocoa powder, baking powder, and baking soda.
2. Whisk the egg, butter, buttermilk and water in a separate bowl. Mix the wet ingredients with the dry. Gently fold in the mini chocolate chips.
3. Use a non-aerosol oil sprayer or silicone basting brush to apply oil to both cooking surfaces. Add 2 tbsps of the batter into the Express Waffle Bite Maker and cook until crispy. Repeat until all of the batter is used.
4. Serve the waffles with vanilla ice cream, strawberries, and powdered sugar.



**FEEL GOOD GUARANTEE™**

Dash values quality and workmanship and stands behind this product with our Feel Good Guarantee™. To learn more about our commitment to quality, visit [bydash.com/feelgood](http://bydash.com/feelgood).

Our customer support teams in the US and Canada are at your service Monday - Friday during the times below. Contact us at **1 (800) 898-6970** or [support@bydash.com](mailto:support@bydash.com)



Hey **Hawaii!** You can reach our customer service team from **3AM to 3PM**. And also, **Alaska**, feel free to reach out from **5AM to 5PM**.

**STOREBOUND, LLC - 1 YEAR LIMITED WARRANTY**

Your StoreBound product is warranted to be free from defects in material and workmanship for a period of one (1) year from the date of the original purchase when utilized for normal and intended household use. Should any defect covered by the terms of the limited warranty be discovered within one (1) year, StoreBound, LLC will repair or replace the defective part. To process a warranty claim, contact Customer Support at 1-800-898-6970 for further assistance and instruction. A Customer Support agent will assist you by troubleshooting minor problems. If troubleshooting fails to fix the problem, a return authorization will be issued. Proof of purchase indicating the date and place of purchase is required and should accompany the return. You must also include your full name, shipping address, and telephone number. We are unable to ship returns to a PO box. StoreBound will not be responsible for delays or unprocessed claims resulting from a purchaser's failure to provide any or all of the necessary information. Freight costs must be prepaid by the purchaser.

Send all inquiries to [support@bydash.com](mailto:support@bydash.com).

There are no express warranties except as listed above.

REPAIR OR REPLACEMENT AS PROVIDED UNDER THIS WARRANTY IS THE EXCLUSIVE REMEDY OF THE CUSTOMER. STOREBOUND SHALL NOT BE LIABLE FOR ANY INCIDENTAL OR CONSEQUENTIAL DAMAGES OR FOR BREACH OF ANY EXPRESS OR IMPLIED WARRANTY ON THIS PRODUCT EXCEPT TO THE EXTENT REQUIRED BY APPLICABLE LAW. ANY IMPLIED WARRANTY OF MERCHANTABILITY OR FITNESS FOR A PARTICULAR PURPOSE ON THIS PRODUCT IS LIMITED IN DURATION TO THE DURATION OF THIS WARRANTY.

Some states do not allow the exclusion or limitation of incidental or consequential damages, or limitations on how long an implied warranty lasts. Therefore, the above exclusions or limitations may not apply to you. This warranty gives you specific legal rights and you may also have other rights, which vary from state to state.

Refurbished items or items not purchased through an authorized retailer are not eligible for warranty claims.

**REPAIRS**

**DANGER!** Risk of electric shock! The Dash Express Waffle Bite Maker is an electrical appliance. Do not attempt to repair the appliance yourself under any circumstances. Contact Customer Support regarding repairs to the appliance.

**TECHNICAL SPECIFICATIONS**

Voltage 120V ~ 60Hz  
Power Rating 1000W  
Stock#: DWBM007\_20220420\_V2





1-800-898-6970 | @bydash | bydash.com